



RUNESTONE!

A "ROCK" MUSICAL

Book & lyrics by **Mark Jensen**

Music, additional lyrics & arrangements by **Gary Rue**

May 7-29, 2022

history theatre



SHERATON

Duluth Hotel

Duluth's Gathering Place

Sheraton Duluth Hotel is ideally located in the heart of downtown with scenic views of Lake Superior.

Our thoughtfully designed and newly renovated rooms are perfectly situated for anything from business trips to extended vacations. Settle in for a relaxing and restful stay.

MARRIOTT
BONVOY

301 East Superior Street
SheratonDuluth.com



TOGETHER AGAIN!

A Summer Night Out
to Benefit History Theatre

SATURDAY JUNE 25



Learn more online at www.historytheatre.com/annualbenefit



Dear Friends of History Theatre,

After 27 years as your Artistic Director, I have decided to announce my retirement which will begin on January 1, 2023! It has been an incredible journey and many of you have stayed with me for the entire ride. It *was* and *is* one of the most wonderful jobs in the American theater.

I have had the great privilege to commission over 100 new plays and musicals about the people whose lives have made a difference in our state and have made the world a better place. And, of course, we had to tell a tale or two about a few scoundrels, just to remind us that we can do better (Thank you, Alvin “Creepy” Karpis and Marjorie!).

Over the years, I’ve had the chance to sit down with the likes of Walter Mondale, Josie Johnson, Nellie Stone

Johnson, the Augie Garcia Family, the Rangel Family, Ralph Rapson, and to speak with Toni Stone, Patty Andrews, Clyde Bellecourt, Mickey Rooney, Tony Oliva, Bobby Vee, The Crickets, Frank & Malachy McCourt, the McDonald Sisters, as well as family members of “orphan train riders,” “children of WWII spies and WWII vets like Dr. Harold Brown, polio survivors, “birth mothers” from the Catholic Infant Home and so many more.

It's been a rich and rewarding quarter of a century-plus. It's been an absolute pleasure to work with the Twin Cities' best playwrights, composers, actors, directors, stage managers, designers, running crews, and our many dedicated and long-time staff members such as In-Fin Tuan, who has done our PR for 20-some years and Chari Hall, who has been with me for the entire ride!

Certainly, we have had struggles over the years, but these last 10 seasons with my partner in crime, Managing Director Karen Mueller, have been exceptional. With your love and support of History Theatre, we have grown into one of the most important theater companies in the USA. A special THANKS to our many dedicated members of our Board of Directors who had faith in our mission to fight for and support this wonderful theater. (A special shout out to John Apitz who was on the board when I was hired back in 1995 and is still a stalwart member of the board!)

Erin Hart, a former St. Paul theater critic once wrote, "*Every city in America should have a History Theatre.*" -- she was right!

I've even enjoyed my long-time relationships with theater critics from both the major papers including but not limited to Graydon Royce and Dominic Papatola who usually trashes us. (Still, I'm friends with him.)

To read more, visit www.historytheatre.com/ron-peluso-retire

As RUNESTONE plays on the main stage, it will be great fun for me to go on the road this spring to remount our mega-hit, GLENSHEEN: The Minnesota Tour, and this July we'll bring it back to St. Paul! Come October, I'll remount my version of BUDDY: THE BUDDY HOLLY STORY. These wonderful shows have given me such joy as I've had the opportunity to collaborate with the magnificent team of Jeffrey Hatcher and Chan Poling and one final chance to revisit the heartbeat of the Surf Ballroom where Buddy and his gang shook the world with their music.

Finally, I'll close out my tenure by directing A SERVANTS' CHRISTMAS. It was the first History Theatre play that I directed as a Visiting Artist way back in 1988. In 2003, I commissioned John Fenn and composer Drew Jansen to turn this charming play into a lovely and poignant holiday musical for our times.

Soon, a new generation of History Theatre artists will continue this most important and precious mission and I'm sure you'll see me occasionally watching it happen from the balcony. (Those really are great seats!)

Stay safe and well,





Land Acknowledgment

History Theatre sits on the ancestral, traditional and contemporary land of the Dakota people, for whom the land holds historical, spiritual, and political significance. We recognize and honor the Dakota people, ancestors, and descendants, as well as the land itself, and all the sovereign Native nations in Minnesota and beyond. We recognize that this acknowledgement itself is not enough, and only serves as a first step towards decolonization.



CONTENT WARNING

THIS PRODUCTION CONTAINS

- **Dialogue Referencing Suicide**

If you or your loved one is struggling -- you can always talk to a counselor 24/7 by dialing the National Suicide Prevention Hotline at 1-800-273-8255 or texting in Minnesota to 741741.

- **Strobe Lighting Effects**

Strobe lighting effects may affect patrons who have photo sensitivities or photo-sensitive epilepsy.

- **Theatrical Fog/Haze**

Theatrical Fog/Haze is water-based.





FROM THE ARTISTIC DIRECTOR

What is the truth about the Runestone?

It was in the 'before time' - before Covid and before Obama, but many years after the Vikings' 4th Super Bowl defeat, when our playwright, Mr. Mark Jensen came to me with his idea for a play about the Kensington Runestone. It would come to pass that 'the play' would be in our history books as one of the first plays to wash up onto the rocky shores of our first RAW STAGES in 2002.

In the decades that followed, the Runestone play would evolve and return once again to the world of RAW STAGES. Then at last, Mr. Gary Rue, a 1980s rocker, would enter the scene with an AXE in hand! Sparks began to fly, as a Jensen/Rue Musical would begin to take shape. Soon, a young musical theater warrior by the name of Sir Tyler Michaels King would take hold of this newly minted musical and whip it into the kingdom of the Mainstage! A ROCK MUSICAL for the ages!

Finally, a cast of adventurous singer/actors & craftspersons would come aboard to tell the tale of the Swedish farmer, Olof Ohman and the STONE that would ROCK THE WORLD!

Was it REAL?

Was it a FAKE!

What is the TRUTH about the RUNESTONE?

Enjoy,
Ron Peluso

P.S. Your comments, questions, and feedback are always welcome!



Written by
Mark Jensen

Music, Additional Lyrics and
Arrangements by
Gary Rue

Directed by Tyler Michaels King*
Musical Direction by Brian Pekol

TIME/PLACE

The musical begins in Kensington, Minnesota in 1898, but it might begin earlier in 1362. While it mainly takes place around Kensington, we also journey to Norway, Wisconsin, Greenland, and other places and times.

THERE WILL BE ONE 15-MINUTE INTERMISSION

THE CAST

Olof Ohman..... Sasha Andreev*
Karin Ohman, Professor Rygh, Ensemble Ivory Doublette*
Edward Ohman, Sam Sieverts, Ensemble Ryan London Levin
Amanda Ohman, Alexandria Reporter, Ensemble Kiko Laureano
John Gran, JP Hedberg, King Magnus, EnsembleEric Morris*
Walter Gran, Captain Knutson, Ensemble..... Wesley Mouri*
Hjalmar Holand, Minneapolis Reporter, Ensemble Adam Qualls*
Johan Holvik, Elbow Lake Reporter, Ensemble.....Jon Andrew Hegge*
Understudies Peyton Dixon, Elena Glass* Ben Lohrberg

THE BAND

Musical Director, Keyboard Brian Pekol
Composer, Guitar Gary Rue
Bass Colby Hansen
Drums David Rapheal
Understudies David Schmalenberger (bass/guitar)



National
New Play
Network



The Director is a member of the
STAGE DIRECTORS AND CHOREOGRAPHERS
SOCIETY, a national theatrical labor union.

* denotes a Member of Actors' Equity Association
‡ denotes a Member of the Stage Directors and
Choreographers Society, Inc.
• denotes a Member of American Federation of
Musicians Local #3073



Song List

ACT I

RUNESTONE	Olof, Ensemble
MEMORY'S FULL BOUNTY	Olof, Ensemble
SEE THE STONE!	Hedberg, Olof, Ensemble
INSCRIPTION	Ensemble
INSCRIPTION REVIEW #1	Ensemble
TIME TO FORGET WHAT THEY SAY	Olof
WORTH THE COST	Olof, Holand
INSCRIPTION REVIEW #2	Ensemble
BIGWIGS	Ensemble
RURAL HUMOR	Olof, Hedberg, Nils
RUNES OF RUIN	Karin
RUNES OF RUIN REPRISE	Karin
THE MIGHTY KNORR	Holand, Ensemble
INSCRIPTION REPRISE	Ensemble
HE ENDS	Olof, Karin, Amanda,
.....	Edward, Holand and Holvik

ACT II

ROCK THIS HOUSE, PART ONE	Holand, Ensemble
TIME TO TELL ALL WHAT WE SAY	Amanda, Olof
HIS BOOKS	Holvik, Amanda
YOUR BOOKS REPRISE	Amanda
ROCK THIS HOUSE, PART TWO	Holvik, Holand, Ensemble
TUNES OF THE RUNES	Holvik, Holand, Ensemble
ALL I KNOW	Edward, Olof, Ensemble
INSCRIPTION REDUX	Holand, Ensemble
TEMPLAR KNIGHTS!	Ensemble
SPINNING	Amanda, Olof
OLOF'S LAMENT	Olof, Ensemble

ARTISTIC/PRODUCTION TEAM

Playwright	Mark Jensen
Composer	Gary Rue
Director	Tyler Michaels King*
Musical Director	Brian Pekol
Choreographer	Stephanie Anne Bertumen*
Dance Captain	Eric Morris*
Scenic Designer	Joel Sass
Lighting Designer	Karin Olson
Sound Designer	C Andrew Mayer
Costume Designer	Sonya Berlovitz
Props Designer	Abbee Warmboe
Dramaturg	Laurie Flanigan Hegge*
Artistic Director	Ron Peluso*‡
Technical Director	Gunther Gullickson
Costume Manager	Becca Michelle
Wardrobe	Janet Hall*
Producing and Directing Associate	Richard D. Thompson
Stage Manager	Haley Walsh*
Assistant Stage Manager	Miranda Shunkwiler
COVID Safety Manager	Peter Simmons
Production Manager	Wayne Hendricks*
Scenic Charge Artist	Dee Skogen
Painter	Erika Soukup
Master Carpenter	Zachary Morgan
Master Electrician	Nick Walberg
Assistant Master Electrician/Sound Engineer	Nick Fetting
Spotlight Operater	Simon VanVector-Lee
Stage Electricians	Jeff Nappl, Mags Scanlon, Dante Benjegerdes, Mike Lee, Aaron Phillips
Carpenters	Nick Barron, James Duncan, Brian Hesser, Tyler Krohn
Closed Captioning, Open Captioner	Laura Wiebers
ASL Interpreter	Linda Gill, Nella Titus
Audio Describer	Connie Fullmer



* denotes a Member of Actors' Equity Association
 ‡ denotes a Member of the Stage Directors and Choreographers Society, Inc.
 • denotes a Member of American Federation of Musicians Local #3073



FROM THE PLAYWRIGHT

What do you believe is true?

What do you believe is true? That question has two high-powered concepts in it, “belief” and “truth.” What we believe is true shapes how we interact with others. Because what we believe is true also has a flipside that defines what we believe is false. Those people who do not believe in our truth are confused, misinformed, or even dangerous.

The Kensington Runestone (KRS) is an artifact that forces us to take a side, hoax or history. Many believe it’s impossible an immigrant Swede could unearth a medieval artifact in Minnesota. But the discovery site is near the source of the Red River and the Great Lakes – water systems that explorers would follow. Most runologists contend the runes are not an authentic 14th script, but others counter that the runes originate from medieval Gotland. One side’s facts are the other side’s fictions.

Social media and fragmented news outlets make it easy to reinforce our beliefs. But if we embrace the other side, or other sides, we can lose our delusions and prevent harm to ourselves and others. We might not discover the truth (KRS, hoax or history), but maybe understanding questions instead of believing answers is better for us all.

I grew up on a farm just north of where the Kensington Runestone was found. Nearly every business has “Runestone” or “Viking” in its name. A giant Viking statue guards main street in Alexandria. I was a member of the Runestone 4-H Club, and we held our meetings in Olof Ohman’s barn. I went to Solem Lutheran Church where Olof and his family are buried; we kids played hide and seek near his grave.

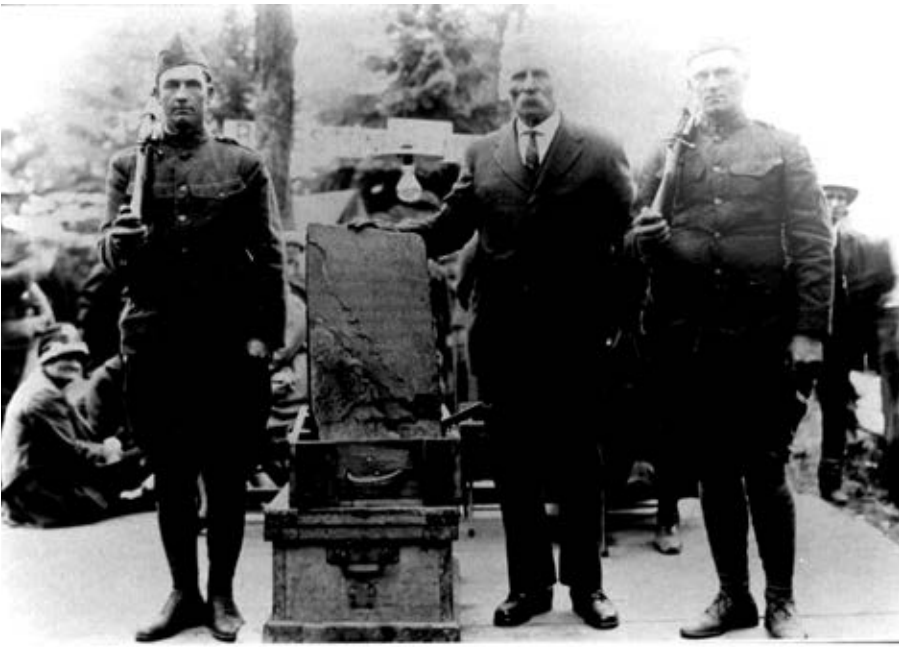
To dramatize my hometown mystery, I first met Scott Wolter, a geologist whose research advocates for the stone’s authenticity. He introduced me to Darwin Ohman, Olof’s grandson, who shared many stories about his

family. I read a century's worth of books and articles for and against the stone. I even went to a hoax lecture that erupted into a shouting match.

But writing a compelling script eluded me. I wrote over twenty versions. (Uff-da) Ron Peluso suggested I turn my play into a "rock" musical. Composer Gary Rue joined this journey, and together we developed another version. But our director, Tyler Michaels King, thought it would be great if the story focused on Olof. Gary and I got into our groove (pun intended) and started carving out this script.

Besides the people I mention above, I owe many others a big thanks. Both Brian Pekol, our music director, and Laurie Flanigan Hegge, our dramaturg, made sure the music and the script kept moving along. Tom Trow shared his thorough hoax research. Kensington historians Ruth Johnson and Mel Conrad passed along Kensington history. My uncle Omar, mother Marlys, and wife Jill encouraged me to keep on. And a big thanks to Ron Peluso and History Theatre for supporting this project over many years. This rock is finally rolling.

Mark Jensen



Olof Ohman standing with Runestone at Fahlins Point, June 1, 1927



FROM THE COMPOSER

“...This could be a rock musical”

Playwright/lyricist Mark Jensen invited me to work with him on his fascinating musical “Runestone” in 2015. By 2018 we had created a complete score and had attracted the attention of Ron Peluso, who had followed the progress of “Runestone” since its inception in 2001. When the creative process had reached a certain point, Ron invited us to be part of History Theatre’s January 2019 Raw Stages. I recall Ron strolling over after the final performance and sitting right down next to me in the lobby. After a brief silence, he suggested “...this could be a ‘rock musical’...you know, the runestone is a rock, after all...you can do that, can’tcha?”

My own moment of silence followed (thinking...thinking...), and I joyfully concluded “well, heck yeah, what a great idea!” I had the pleasure of drawing on my favorite pop/rock influences of the ‘70s and ‘80s to produce the music inspired by ‘The Rock’.

It has been such a joy to be part of this process. I want to thank Mark Jensen for inviting me to write the music and for being such a terrific collaborator, Tyler Michaels King for his excellent dramaturgy and direction, Brian Pekol, whose enthusiasm and talent are off the scale, and last and most certainly Ron Peluso and History Theatre.

Rock this house, the Stone is finally here!

Gary Rue



FROM THE DIRECTOR

A Minnesotan Mash-Up

Welcome to our rural rock and roll re-telling. We're glad you're here.

When I first began work on this show in the fall of 2018, I was immediately drawn in by both the humor of Mark's script and the way it reflects our current times. Much like today with our cooked-up stories, misinformation, and alternative facts, the narratives in *Runestone!* start out as ridiculous, even hilarious, but often result in division, mistrust, conflict, and in the worst of cases, harm.

On the surface, *Runestone!* is a kooky mash-up of a Minnesotan legend and a classic rock and roll show. We've got gags, one-liners, and a showstopper or two! Deeper though, you will find the story of a rural farmer caught in the whirlwind of an ever growing myth— an honest man who will sacrifice everything for what he knows to be true.

This story spans over 700 years of speculated runestone history, from the 1300s to the mid 2000s. In our telling, we've stripped away many of the specific dates, times and some locations to keep the story vital and present. It is only Olof and his runestone that act as our guides through the weaving plot; journeying through time and across continents, showing us how truth can be twisted or embraced.

We are thrilled to chisel this story out for you tonight.

Enjoy and "rock" on.

Tyler Michaels King

Runestone Timeline

1362

According to the runes, the Kensington Runestone (KRS) is carved by medieval explorers.

1898

Olof Ohman unearths the KRS on his farm near Kensington, MN.

1899

Runologists decide the KRS is a hoax; accuse Olof of carving it.

1907

Hjalmar Holand gains possession of the KRS from Olof, and asserts the KRS is a Viking artifact.

1911

Hjalmar Holand takes the KRS to Europe; gains support for its authenticity.

1927

Rally for a KRS monument held at Fahlin's Point on Oscar Lake, MN.

1935

Olof Ohman dies.

1948-49

The KRS is placed on display at the Smithsonian Institute.

1950s

Johan Holvik, Erik Wahlgren, and Erik Moltke argue the KRS is a hoax.

1958

KRS placed on permanent display at the Runestone Museum in Alexandria, MN.

1958

Erik Wahlgren publishes his hoax book, *The Kensington Stone, A Mystery Solved*.

1967

Walter Gran, a neighbor to the Ohmans, makes a tape claiming his dad helped Olof carve the KRS.

2006

Scott Wolter and Richard Nielsen re-ignite debate, assert KRS was carved by the Knights Templar.

— Compiled by Mark Jensen

Was Text of Rune Stone Prepared Before It Was Carved?

1. Minneapolis Star, April 11, 1957



YES George Elin, Minneapolis newspaper editor, insists a series of articles before discussing the Olafsson Runestone stone.



OLOF OHMAN (CENTER) WITH RUNE STONE (ABOUT 1898).
Another stone by which it was discovered as a construction.



NO Hjalmar Holand, historian, says, in the past, (staff) suggesting for leaving the stone stone, especially after 1907, when he wrote that it was the most recent of Scandinavian production of North America 150 years before Columbus. His books and articles have contained many interesting details and theories.

A Brief History of the Runestone

When Olof Ohman dug up the Kensington Runestone (KRS) on his farm in 1898, it caused an international sensation.

The runes describe a joint expedition of Swedes and Norwegians that reached Minnesota in 1362. If true, the runes would prove Scandinavians reached North America before Columbus. But given that the KRS was found in the middle of North America by a Swedish immigrant, runic scholars immediately dismissed it as a fraud. They accused Olof Ohman of carving a joke.

Olof denied the accusations. The disgraced stone was given back to



him, and it lay in his granary for many years. Then in 1907, Hjalmar Holand, a book salesman and young historian, convinced Olof to give him the KRS. Hjalmar wrote several articles and books defending the stone, building enough credible evidence to gain academic support. Hjalmar

Holand's efforts peaked when the KRS was put on display at the Smithsonian Institute in 1948-49.

Johan Holvik, a professor at Concordia College (Moorhead), was deeply skeptical of the KRS. He joined forces with two runologists,

Dr. Erik Walgren (UCLA) and Dr. Erik Moltke (National Museum of Denmark) to prove that the KRS was a hoax. Together, they gathered evidence asserting the KRS was a well-planned conspiracy carved by Olof Ohman and his close friends. In 1958, Erik Walgren published a book detailing their findings. Then later, renowned Minnesota historian Theodore Blegen built on their research and wrote another book linking Olof to the KRS. Finally in 1967, Walter Gran, a neighbor of the Ohman's, recorded a tape claiming that his dad and Olof carved the KRS.

But the case for Olof's involvement is circumstantial, and recent analysis even asserts that Olof spoke in a different dialect than the runes. In the decades since, geologists, historians, and even some runologists assert the KRS is real. However, most runologists continue to maintain the KRS is a hoax. Olof's family, neighbors, and others defend him to this day. Did Olof and his friends carve the stone? Did medieval Scandinavians reach Minnesota in the 14th Century? Did Olof dig up a hoax carved by someone else? The mystery remains and the debate rages on.

— *Mark Jensen*



Olof and Karin Ohman family, 1893



Olof and Karin Ohman, 1934



Ohman family house

The Cast



SASHA ANDREEV* (he/him)

Olof Ohman

Sasha proudly makes his History Theatre stage debut, having rocked out with “Runestone” since its Raw Stages 2019 workshop. Most recently seen in *All is Calm: The Christmas Truce of 1914* with Theater Latté Da, he has appeared on many Twin Cities stages, including the Guthrie, Pillsbury House, Mixed Blood, Park Square, Frank, Jungle, Trademark, Theater Novi Most, Hennepin Theatre Trust, Chanhassen Dinner Theatres; and nationally at Asolo Rep, Actors Theatre of Louisville and Off-Broadway. On screen, Sasha has been seen on PBS, HGTV, ShopHQ, and in numerous commercials and films. Catch him this summer in Theater Latté Da’s production of *Twelve Angry Men*.



IVORY DOUBLETTE* (she/her)

Karin Ohman, Professor Rygh, Ensemble

Ivory was last seen in *Parks* at History Theatre and she is delighted to be back! Ivory has performed regionally with MainStreet Theatre in Rancho Cucamonga, CA; The Marriott Theatre in Lincolnshire, IL; and locally with Frank Theater, Jungle Theater, Theater Latté Da, Penumbra Theatre, Ordway Center, Park Square Theatre, The Playwrights Center, History Comes to Life, Intermedia Arts, Children’s Theatre Company, Chanhassen Dinner Theatres, Old Log Theatre, Nautilus Music-Theater, Interact Theater, and Illusion Theatre. Ivory has a Bachelors in Theatre Arts from the University of Minnesota-Twin Cities. She is an AEA member. Ps. 16:11.



JON ANDREW HEGGE* (he/him)

Johan Holvik, Elbow Lake Reporter, Ensemble

Jon last appeared at History Theatre in *Dirty Business* and *Sweet Land, the Musical*. Other theatre includes Guthrie: *Guys and Dolls, A Christmas Carol, 1776*; Ordway: *Beauty and the Beast*; Mixed Blood: *An Octoroon*; Park Square Theater:

Ragtime, Democracy, The Diary of Anne Frank, Cyrano; History Theatre: *Radio Man, Baby Case, Working Boys Band*; Artistry: *Awake and Sing*; Chanhassen: *All Shook Up, The Wonderbread Years*; Old Log: *The Best Little Whorehouse in Texas*; Skylark Opera: *On the Town, Door Shakespeare: Taming of the Shrew, As You Like it*; Northern Sky Theater: *Loose Lips Sink Ships, Miskie Love*, as director: *Victory Farm and Boxcar*, Rochester Civic: *Ring of Fire* (director). Upcoming: *Beauty and the Beast*, Ordway.



KIKO LAUREANO (she/her)

Amanda Ohman, Alexandria Reporter, Ensemble

Kiko is a local actress and teaching artist based in St. Paul. She holds a B.F.A. in Musical Theatre from Indiana University. Recent credits include: Minnetonka Theatre: *Joseph... Dreamcoat* (The Narrator); Lakeshore

Players: *Company* (Jenny); Lyric Arts of Anoka: *The Revolutionists* (Charlotte Corday), *Evita* (Eva Perón); Guthrie Theatre: *A Christmas Carol* (Ensemble); and Mixed Blood Theatre: *Autonomy* (Gabby).



RYAN LONDON LEVIN (he/him)

Edward Ohman, Sam Sieverts, Ensemble
Ryan is so happy to be back at History Theatre for another exciting new musical! Last seen in *Christmas of Swing, Dirty Business: A Spy Musical, Teen Idol: The Bobby Vee Story* and *Orphan Train*.

Other works include: *Sherwood, The Adventures of Robin Hood* (Yellow Tree); *Cinderella* (Children’s Theatre Company); *Jefferson Township Sparkling... Pageant, The Diary of Anne Frank* (Park Square Theater); *The Mikveh Monologues* (MN Jewish Theater Company); *She Loves Me, Awake and Sing, The Last Five Years, Fiddler on the Roof* (Artistry); *The Boy and Robin Hood* (Trademark Theater); *Romeo and Juliet* (Cromulent Shakespeare Company).
Television: *I Was There* (History Channel).



ERIC MORRIS* (he/him)

John Gran, JP Hedberg, King Magnus, Ensemble

Eric is thrilled to return to History Theatre. Past credits include *Teen Idol: The Bobby Vee Story, Lord Gordon Gordon, and Tales Along the Minnesota Trail*. Select Twin Cities credits: Guthrie Theater: *Guys & Dolls*; Artistry Theater: *The Bridges of Madison County*; and Theatre Latte Da: *Assassins*. Regional collaborators: The Barn Theatre where he directed *SpongeBob SquarePants: The Broadway Musical*; Dayton Opera, Beef & Boards, Gallery Players, and the Heritage Theatre Festival. He is Director of Production at Old Log Theatre where *Jimmy Buffett’s: Escape to Margaritaville* is currently running. Select Old Log directing credits: *A Gentleman’s Guide to Love and Murder, The Play That Goes Wrong, Ghost: The Musical, Lend Me a Tenor, Tenderly: The Rosemary Clooney Musical*. Eric has a BFA in Musical Theatre from Ithaca College.



WESLEY MOURI* (he/him)

Walter Gran, Captain Knutson, Ensemble

Wesley is excited to debut on the mainstage after participating in many History Theatre workshops over the years. Other select credits include *Flower Drum Song, A Little Night Music* (Theater Mu); *South Pacific, The Cocoanuts, The Music Man* (Guthrie Theater); *Jesus Christ Superstar* (Ordway Center for the Performing Arts); *Hamlet* (Park Square Theatre); *Cinderella* (Children’s Theater Company); *Hello Dolly!, The Little Mermaid, Bye Bye Birdie* (Chanhassen Dinner Theaters). Wesley’s passion for Asian representation in the arts extends behind the scenes through his work as Development Director for Theater Mu. Love to his fiance Brandon and their kittens Miso and Mochi.



ADAM QUALLS* (he/him)

Hjalmar Holland, Minneapolis Reporter, Ensemble

Adam is over the moon to return to the stage after nearly four years away. At History Theatre, he appeared in the original cast of *Glensheen* and *Lord Gordon Gordon*. Other credits: Children’s Theatre Company (*Shrek the Musical, Jackie & Me,*

Theater Latté Da (*Cabaret, Peter and the Starcatcher*), Ordway Center (*Annie*), Park Square Theatre (*Great Expectations, Oliver*

Twist), Illusion Theater (*A Night in Olympus*), Artistry (*Into the Woods; You're a Good Man, Charlie Brown*), and Theatre Pro Rata (*The Taming of the Shrew, 44 Plays for 44 Presidents*). Gratitude to the village it took to get him here.

UNDERSTUDIES



PEYTON DIXON (he/him)

Understudy

Peyton is excited to be joining the cast of *Runestone*. Credits: Ten Thousand Things: *Thunder Knocking on your Door* (U/S Thunder, Jaguar Jr.) History Theatre: *Teen Idol: Bobby Vee Story, Christmas of Swing, TransAtlantic Love Affair: Promise Land*. Artistry: *Hairspray* (Seaweed),

Paul Bunyan Playhouse: *Smokey Joe's Café* (Ken), MPP: *Shrek* (Donkey), Actors Theatre of Minnesota: *A Miracle on Christmas Lake* (Collin), Rochester Civic Theatre: *Jesus Christ Superstar* (Simon), *Elf* (Store Manager), CCP: *25th Putnum.. Spelling Bee* (Chip Tolentino) and many more over the last 12 years. He is happy to create art again with this amazing cast and crew!



ELENA GLASS* (she/her)

Understudy

Elena is thrilled to be returning to History Theatre, where she was recently seen in *Christmas of Swing* (Patty Andrews) and *Beyond the Rainbow* (Judy Garland). Ordway: *Mamma Mia!* (Ali), *Annie* (u/s Grace Farrell & Star-to-Be), *The Sound*

of Music (u/s Maria), *Broadway Songbook: Comden & Green*; Old Log: *Lend Me a Tenor* (Diana, u/s Maggie); Nautilus Music Theatre: *Stations of the Heart*; Yellow Tree Theatre: *One Man, Two Guvnors* (Dolly); Theatre Elision: *Ruthless!* (Miss Thorn). She can be found on Spotify as *The Girl in 14G* by Stage Stars Records. Proud Member, AEA. Graduate of New York University. Thanks to Ron Peluso for offering a 10-year-old her first professional theatrical experience, and for the continued friendship and opportunities.



BEN LOHRBERG (he/him)

Understudy

Ben is a Minneapolis-based theatre artist and educator. He has performed with the Guthrie Theater, Ten Thousand Things, Park Square, Titan Theatre Co., Hope Repertory, Interlochen Shakespeare Festival, and Feinstein's/54 Below NYC.

He has directed at the U of MN/Guthrie BFA Program, Hope Repertory, and Bryant-Lake Bowl Theatre. He is an Instructor of Voice & Songwriting at Chanson Voice & Music Academy in St. Paul and Director of Junior Musical Theatre at Interlochen Arts Camp, where he and co-writer Sophina Saggau's new children's musical, *Imagine It!*, will premiere in 2022. Ben's album of original songs, *Blue Sanctuary*, releases January 2023.

The Band



BRIAN PEKOL (he/him)

Musical Director, Keyboard

Hailing from Rhinelander, WI, Brian has been lucky enough to have made a lively career out of many facets of the performing arts, including as an actor, music director, composer, multi-instrumentalist, and vocalist. Previous History Theatre credits include *Sweet Land, the Musical* and *Teen Idol: The Bobby Vee Story*. He's

toured and performed as a session musician from New York to LA, and worked alongside The New Power Generation, Jim Brickman, Chris Thile, Rockapella and many others. Locally, he co-founded Sidekick Theatre, a professional theater company located in Bloomington that presents plays, musicals, concerts, and other new work year-round for audiences of all ages. When he's not playing music, Brian can usually be found watching his beloved Milwaukee Brewers They still have never won a World Series.



GARY RUE (he/him)

Composer, Guitar

Gary has been performing nationwide since 1964 and was inducted into the Minnesota Music Hall of Fame in 2010. He has been a theatrical composer-lyricist since 1976, and was music director for Gene Pitney from 1986-2006. Gary was the songwriter for his critically acclaimed

pop group Rue Nouveau, and has written songs recorded by Nick Lowe, Helen Reddy and several regional artists. He was honored to receive an IVEY Award for his music direction of History Theatre's "The Buddy Holly Story" in 2011. *Runestone* is Gary's first musical with History Theatre as composer.



COLBY HANSEN (she/her)

Bassist

Colby is a professional bassist and multi-instrumentalist. She has a degree in jazz bass performance from Portland State University and has played with big bands, pit bands, rock bands, and comedy shows. She has performed in Minneapolis, Los Angeles, Boston, Portland, Seattle, and

New Hampshire. Colby played upright and electric bass in *Once Upon A Mattress, The Wizard of Oz, Into The Woods, and Macbeth*. For *Macbeth*, she composed the original score. Currently playing drums in local indie-pop band Minigolf, this is Colby's debut pit band performance at History Theatre.



DAVID RAPHEAL (he/him)

Drums

David is a freelance multi-instrumentalist, audio engineer, and teacher based out of Minneapolis. He works as a private lessons instructor at the School of Rock in Eden Prairie and spends a lot of time on the road. He's performed in a variety of venues across

the country, from opening for famous acts like 30h13 to punk shows in a basement in the middle of California. In his own writing, his background in alternative rock and pop helps to push his own musical boundaries while still trying to keep the catchiness, passion, and musicianship of great songwriters like Billy Joel and John Mayer at the forefront.

DAVID SCHMALEMBERGER (he/him)

U/S Bassist

Dave recently performed with Grammy-nominated jazz vocalist Karrin Allyson, the Daisy Dillman Band, cabaret legend Marilyn Maye, Pat Frederick and Low Company, and DAT Trio. He also recently recorded with trumpeter and Minnesota Orchestra member Chuck Lazarus ("Merrier and Brighter"), the Laura Caviani trio with Chris Bates ("Mysterious Thelonus" and "Confluence"), Vicky Mountain and David Martin ("Play On"), and "Take That Back!" Dave received his DMA in Percussion Performance and World Music from West Virginia University. He is currently an adjunct faculty member at Augsburg University and Anoka Ramsey Community College, and is thrilled to rock out with "Runestone!"

* denotes a Member of Actors' Equity Association

The Creative Team

MARK JENSEN (he/him)

Playwright

Mark is an award-winning playwright, lyricist, and author. His plays and musicals include *Young Lindy* (with Gary Rue), *History Detectives: Landmark Center* (with Raymond Berg), *Tom Sawyer* (with Gary Rue), *Atomic Summer* (Theatre in the Square), *The Benevolent Women's Craft Society* (Rochester Repertory Theatre), *Weldings* (Prairie Wind Players), and *Hoffman: Journey Through Time*. He has received commissions from the Alfred P. Sloan Foundation, National Endowment for the Humanities, and the Lake Region Arts Council. Mark was a playwright-in-residence at the Utah Shakespearean Festival. He is the co-author of the non-fiction books *HR Pioneers* and *Scripting Our Lives*. His debut novel, *My Brother is a Cyborg from Saturn*, will be published by TouchPoint Press (2023). A Core Alumnus and past Board Member of the Playwrights Center of Minneapolis, he received his BA in Theatre Arts/English Writing from Concordia College (Moorhead, MN) and his MFA in Playwriting from the University of Nevada, Las Vegas.

TYLER MICHAELS KING (he/him)

Director

Tyler is a Twin Cities-based director, actor, and improviser, and is the Artistic Director and Founder of Trademark Theater. He has worked and played with the Guthrie Theater, The Ordway, Theater Latte Da, Children's Theater Company, Hennepin Theater Trust, History Theatre, Chanhassen Dinner Theatres, Illusion Theater, Artistry, and Flying Foot Forum among many others. Tyler has also created shows with Live Action Set, 7th House Theater, and many projects for the Minnesota Fringe Festival. He holds the 2014 Emerging Artist Ivey Award, the Mark Twain Prize for Comic Performance from the Kennedy Center National ACT Festival, and was named "Artist of the Year" by *City Pages*. Tyler is also a founding member of The Bearded Company. tylermichaelsking.com IG: @tylermichaelsking

STEPHANIE ANNE BERTUMEN* (she/her)

Choreographer

Stephanie returns to History Theatre after performing in *The Debutante's Ball* (2015) and *Complicated Fun* (2016). Choreography credits include *The Great Gatsby* (Chaska High School), *The True Story of the Three Little Pigs* (Old Log Theatre), and *Escape to Margaritaville* (currently at Old Log Theatre). As an actor, she has also worked with Children's Theatre Company, The Old Globe, Ten Thousand Things, Theatre Latte Da, Ordway Center for the Performing Arts, and the Guthrie Theater. She is a proud graduate of the University of MN/ Guthrie Theater BFA Actor Training Program.

JOEL SASS (he/him)

Scenic Designer

Joel is a Twin Cities-based director/designer/producer whose work has been seen at The Guthrie, Theatre Latte Da, Park Square, the Jungle, Artistry, Open Eye Theatre, California Shakespeare Theatre, Arizona Theatre Company, Oregon Shakespeare Festival and others. For History Theatre he has previously designed *Dirty Business*, *Gloria*, *The Paper Dreams of Harry Chin*, in addition to directing and designing *Courting Harry*.

CANDREW MAYER (he/him)

Sound Designer

C Andrew has designed sound and/or projections for over 75 shows at History Theatre. Previously he designed *Not For Sale*, *Not In Our Neighborhood*, *Beyond The Rainbow*, *Gloria: A Life*, *Dirty Business*, *Teen Idol: The Bobby Vee Story*, *All the Way*, *Watermelon Hill*, *Glensheen*, *Hiding in the Open*, *Tyrone and Ralph*, *A Piece of the Rope*, and *Hmong!* among others. He has worked with many fine theatres in the Twin Cities including the Minnesota Opera, the Guthrie, the Jungle, Pillsbury House,

Park Square, and Mixed Blood, and elsewhere, including Opera Philadelphia, Arkansas Rep, Everyman Theatre in Baltimore and ACT in San Francisco. He won an Audelco Award for his design for *Pure Confidence* at 59E59 in NYC, and was a 2008-09 McKnight Theatre Artist Fellow. In the summer he serves as Producing Director of the Acadia Repertory Theatre on Mount Desert Island, Maine.

KARIN OLSON (she/her)

Lighting Designer

Karin has been lighting performance for over 20 years, collaborating with design teams at the Guthrie, Penumbra, Mixed Blood, Artistry, Frank Theatre, Theater Mu, Full Circle Theater, Ten Thousand Things and with dance companies Threads Dance Project, Alternative Motion Project, Collide Theatricals and TU Dance. She designs regionally for Oregon Shakespeare Festival, Syracuse Stage and Trinity Rep. Recent designs include Taiko Arts Midwest's HERbeat at the Ordway, Redwood at the Jungle, and Antigone at Cleveland Playhouse. Upcoming projects include *Cambodian Rock Band* at the Jungle. More info at karinolsonlighting.com.

SONYA BERLOVITZ (she/her)

Costume Designer

Sonya has designed several shows for History Theatre, including *Nellie* (2012), *Lord Gordon Gordon* (2018), and *Sisters of Peace* (2019), and over sixty productions at Theatre de la Jeune Lune. Since 2008 Sonya has worked on numerous shows with The Moving Company at South Coast Repertory, Playmakers Repertory Theatre, Berkeley Repertory Theatre, Actor's Theatre of Louisville, and the Lab Theatre (Mpls). Productions elsewhere have included Children's Theatre Company, the Guthrie Theatre, American Repertory Theatre, Skylight Music Theatre, La Jolla Playhouse, The Jungle Theatre, Theatre Latte Da, and Park Square Theatre. She is the recipient of numerous grants and awards, including The Bay Area Theatre Critics Circle (*The Green Bird* 2000, *Tartuffe* 2015) and a McKnight Theatre Artists Fellowship (1998, 2016).

ABBEE WARMBOE (she/her)

Properties Designer

Abbee is a freelance props designer based in Minneapolis. Having grown up in Minnesota she is happy to have made a career for herself here, working on over 200 productions with 38 different companies over the last decade. Previous work at History Theatre includes *Parks*, *Gloria: A Life*, *Lord Gordon Gordon*, *The Highwaymen*, *The Paper Dreams of Harry Chin*, among others. Recently, her work could be seen with Theater Latte Da, Penumbra, MN Opera, Mixed Blood, Old Log, Theater Mu, Pillsbury House, Ten Thousand Thing, among others. Abbee was a 2020-21 McKnight Theater Artist Fellow at the Playwrights' Center.

HALEY WALSH* (she/her)

Stage Manager

Haley is a freelance stage manager based in the Twin Cities. Previous credits include shows at Mixed Blood Theatre, Theater Mu, Pillsbury House Theatre, Park Square Theatre, and Minnesota Jewish Theatre (now Six Points), among others. This is her 16th show with History Theatre.

MIRANDA SHUNKWILER (she/her)

Assistant Stage Manager

Miranda is happy to be back at History Theatre where she worked on *Not For Sale* and *Parks*. Born and raised in the Twin Cities, she has been blessed to be a part of the theater community, working with companies such as Six Points Theater, New Native Theatre, Stages Theatre Company, Minneapolis Musical Theatre, Classical Actors Ensemble, and many more. Miranda is passionate about musical theater and extends her deepest gratitude for your support.



FROM THE EDUCATION MANAGER

We welcome you to the theatre this spring with some music and some joy. It feels good. It also feels good to share the stories of the place we call home, some of which are well known and others of which are hidden gems.

In the education department, the cornerstone of everything we do focuses on helping people tell and share their own stories, their personal histories really. Taking that brave step always creates community between those who share and those who bear witness.

This spring we are returning to public school classrooms for the first time since 2019. That feels good too. (Honestly it feels great!) Our partners at AGAPE, Avalon, and Humboldt are bringing us back so that we can conduct the Seats to Stage residency which invites young people to think of their lives as pieces of our shared history. Their stories, their choices, their presence in this world are making history every day. And we couldn't be more excited to work with them again.

Looking further down the road, we are hoping to partner with Episcopal Homes for our class called Cabaret for Seniors. In this class participants choose favorite songs from their past and consider why they were so meaningful. They rehearse the song and create a monologue and perform it in the community and at Episcopal Homes. If you want more music and more joy, I could not recommend anything more highly.

Enjoy the show tonight, the music, the season, and the stories. You, too, are a part of history and the History Theatre family.

Paul de Cordova



Seats to Stage program is back this spring!



FROM THE MANAGING DIRECTOR

You are our “rock”!

Finally, spring is upon us. And with a bit of green and sunshine outside, we begin our final show of the season. *Runestone: The Rock Musical* has been a long time in development, and we are excited to bring the story of this enduring mystery with new music to the stage.

We will be back on stage this July as well, with a summer remount of the (now) classic *Glensheen*. The St. Paul run of *Glensheen* follows a long-awaited tour to four venues around the state including the Reif Center in Grand Rapids, Sheldon Theatre in Red Wing, Theatre L’Homme Dieu near Alexandria (and home of the Runestone Museum), and, the Norshor in Duluth.

We are also busy planning our annual fundraiser. Our theme this year is Together Again! Mark your calendars for June 25 and we will indeed, be together and in person, celebrating Ron and History Theatre.

Thanks for all you do. You are our “rock” in your support of History Theatre’s unique mission!

Karen Mueller

**To make a donation, visit
www.HistoryTheatre.com/donate
or call the Box Office at 651-292-4323.**

Thank you for your support!

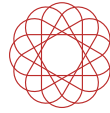


SCAN ME

SUPPORT HISTORY THEATRE
THANK YOU!

THANK YOU FUNDERS

Corporate, Foundation, and Government Funders



OLSETH FAMILY FOUNDATION



F. R. BIGELOW FOUNDATION



Edina Realty



Sarah J. Andersen Fund of the Hugh J. Andersen Foundation



L.E. Phillips Family Foundation
Caliber Foundation

To make a donation, visit www.HistoryTheatre.com/donate or call the Box Office at 651-292-4323.



THANK YOU INDIVIDUAL DONORS

GIFTS AS OF APRIL 4, 2022

LEGACY CIRCLE

The Estate of Betty J. Anderson
The Estate of William Randall Beard
The Estate of Marianne Carroll D'Angelo
June P. Nelson
The Estate of Jeanne Audrey Powers
Ken and Nina Rothchild
The Estate of Dale Gordon Swanson

GIFTS IN MEMORY OF THE FOLLOWING INDIVIDUALS

William Randall Beard
Lance Belville
John Burton
LaVonne Ellingson
Charles and Marla Hall
Warren Olson
Grant Richey
Nina Rothchild
Dennis Wipperling
Dr. Sabina Zimering
Connie Zusan

SEASON PRODUCER

\$10,000 and Up
Anonymous
Sarah Andersen and Chris Hayner
Vicki and Si Ford
Michele^B and Hank Helgen, J. A.
Wedum Foundation
The Lance Belville Fund for New Play
Development, Anonymous
Gene Link^B and Ann Hirsch
Cheryl Olseth and James Empson,
Olseth Family Foundation
Ken Rothchild, in memory of Nina
Rothchild
Phil Rivness
Jeannine Rivet and Warren Herreid,
K.A.H.R. Foundation
Pondie^B and Mark Taylor, The
Nicholson Family Foundation

ACTOR

\$5,000 – \$9,999
Anonymous
Margery Martin and Daniel Feidt
Barbara and Robert Peterson
John^B and Elizabeth Sebastian

NARRATOR

\$2,500 – \$4,999
Anonymous (3)
Dave^B and Ellen Beehler
Ellen Conway
George Dow^B and Bonnie Hill
Joe and Lois^B West Duffy
Mary Anne Ebert and Paul
Stemler
John L. and Catherine J. Hill
Sharon Glasrud
Karen Gooch
Margaret A. Lutz and Terry
Shima
Cheryl Moore^B
Lilly Olson
Jeff Peterson and Jill
Catherwood
Michele Pierce
Jim^B and Kris Rollwagen
Nancy and Raymond Seegar,
Caliber Foundation
Chuck^B and Francelle Slocum
Jon Thomas^B and Duchess
Harris
Doug Tiede^S
Robert L and Barbara J.
Peterson

PLAYWRIGHT

\$1,000 – \$2,499
Suzanne Ammerman
John Apitz^B and Mary Magnuson
Russell and Rebecca Bierbaum
Mary and Harald Borrmann
Roger and Ronnie Brooks
Sandra Burton
Candace Campbell^B and Jerry Seck
Elaine and Jim Christiansen
Jennifer Clark
Bob and Diane Coderre
Sue and David Cummings
David Robinson and Janet Ekern
Jane Davies
James Denton
Marybeth Dorn
Janet Ekern and David Robinson
Anna Marie Ettl
Mary Beidler Gearen
Sam and Mirja Hanson
Lorraine Hart
Robert Hill
Pam and Rick Jacobson
Sandra and Jim Jensen
Susan Kimberly^B
Patricia Koors
Wes and Deirdre Kramer
Suzanne and Miles Lahr
Laurel and Eric Lein
Kathleen Lenzmeier
Candace McClenahan
John and Karen Meslow, Stablich
Foundation
Sara Meyer and Gene Merriam
Jeanie Morrison
Karen Mueller^S
Katherine J. Nevins
Kathryn Nielsen
Fran and David Nordhausen
Carol and Douglas Ogren
Carol Perkins
Ron Peluso^S and Sue Scott
Rick Polenek and Terry McEowen
Richard and Jean Illsley Clark
DeDe and Tom Scanlon
Anne Seaquist
Jean Upson
James and Linda Wallace
Ann Wynia

AUTHOR

\$500 – \$999
Mary and Bill Bakeman
J. Michael Barone
Ronald and Joyce Beauchane
Marianne Berkopec
Larry Bogolub
Janet Bohan
Rita and William Bourne
Angelica Braestrup
Chris and Rita Brandt
Priscilla Brewster
Pearce Bunting and Stephanie
Halleen
Lowell and Judy Carpenter
Diane and Jerry Carlson
Ann Caspar
Cliford C and Virginia G Sorensen
Jeanne and David Cornish
Barbara Doyle
Elizabeth and Mike Foryg
Bob Friedman and Debb Cash
Elaine Gaston and Mark T.
Scannell
Robert and Elizabeth Glesne
Helen Grant
Mindy and Roger Greiling
Harlene Hagen
Dr. Jo-Ida C. Hansen
Rick and Kathy Hansen
Linda Havenor
Wayne Hendricks^S and Sheila
Burke
Jerome Hoffman

THANK YOU INDIVIDUAL DONORS

Michael and Margaret Johnson
 Susan and Ron Kuhn
 Lynn Kvalness
 Wendy and Gordon Legge
 Karen Lilley and David Hansen
 Rebecca Lindholm
 Patricia and William Litchy
 Charlie Maguire
 Barry and Sharon Mason
 Peg Meier
 Crystal Meriwether
 Peter Moore
 Marilyn Nelson
 Tom and Janet Nelson
 Richard and Joan Newmark
 Ben and B-J Norman
 Judy Ohannesian and Doug Tiffany
 Jaime Pedraza and Steve Gronewold
 Donald and Anita Pouchnik
 Paul Robinson
 Paul Schumann
 Laurel Severson
 William R. and Virginia R. Simek
 Julianna and Roger Skluzacek
 Carolyn J Sorensen
 Deanna Thompson and Neal Peterson
 James Vogel and Jenifer Wagner
 Dorothy and Fred Waltz
 Dick and Diane Wright
 Nancy Zingale and William Flanigan

DRAMATIST

\$250 – \$499

Anonymous (3)
 Frank and Barb Abramson
 JoAnn and Chuck Adams
 Paul and Jan Anderson
 Nikki Annoni
 Sylvia Beach and Gordon Rouse
 Ralph and Eileen Beha
 Dan and Dee Bender
 Diane and Henry Benz
 Thomas and Margit Berg
 Denise and Jon Beusen
 Bob Beverage and Cathy Gasiorowicz
 Mary Bloom
 George and Linda Bounds
 Risa Brainin and Michael Klaers
 Valerie Britton
 Sue Byrne
 Diane Cashman
 Elizabeth Childs
 Janet Colliton
 Judith and Richard Corson
 Jeanne Corwin
 Ellie Crosby
 Robert Donnelly
 Patrick and Sharon Dougherty
 Carol Engel
 John Erickson
 Neal Evert
 Sheila Faulkner
 JoAnn Fernandez
 Laurie Flanigan Hegge and Jon Hegge
 Barb Frame
 Michelle Francois and Cliff Traiman
 Lynn Fredricksen
 Barbara and R. Charles Garbe
 Susan Gerstner
 Joan Grzywinski
 Janet Hall⁵
 Greg and Laura Halldin
 Kath Hammerseng
 Kathleen G Hanon
 John Harrer
 James and Jean Hartman
 Jim and Colleen Hayes
 Roberta Hedge
 Amy Hill
 Donna and Richard Humphrey
 Jolene Hunter
 Valerie Jackson
 Suzanne Jebe
 Stephen and Anne Johnson
 Willie Johnson
 Karen Kandik
 Pamela Kildahl
 Bill and Susan Kirkpatrick
 Sharon Kjellberg
 Mary Lou B Knipe
 Paul and Debbie Knooihuizen
 Don and Sue Kratsch
 Tina Krech
 Maureen Kucera-Walsh
 Sara Kuether
 Alvin Kvaal
 Karen Larsen
 Carol and David Larson
 Daniel and Dianne Latham
 James Lenfestey
 Eric Levinson
 Katy Lindblad
 Jessica Looman⁵
 Heidi Louise
 Marianne Ludwig and Jon Boylan
 Juanita and Richard Luis
 Mike and Elizabeth Macdonald
 Susan Maples
 Ruth Markowitz
 Michele Marrinan
 Ron and Mary Mattson
 Elaine and Mike McCauley
 Lisa McDaniel
 Donn and Bonnie McLellan
 Ruth Ann Metzger
 Patty Michalec
 David and Karen Minge
 Kathryn Mitchell and Terrance Brueck
 Diane Moe
 Mary Morris
 Eric Muschler
 Chuck Nelson
 Pamela J Nelson
 Julie Nelson
 Jon Nicholson
 Joan and Dick Niemiec
 Mike O'Connell
 Rick Olson
 Edward and Gwen Paulson
 Lynne and Woody Peterson
 Jeanne Audrey Powers
 Judy and Robert Prentiss
 Johnathan Riehle and Angela Bohmann
 Paul and Pat Sackett
 Mary and Kenneth⁵ Schaefer
 James and Susan Selchow
 Linda and Garry Sill
 Judith Solarz
 Kurt and Susan Sroka
 Sharron and Oren Steinfeldt

John and Marcia Stout
 Julie Thomas
 Robert and Carol Thompson
 Tom and Julie Thompson
 Brian and Vallorie Toder
 Joann Trygstad
 In-Fin Tuan⁵
 Karen and Norman Vinnes
 Sue and Leon Vogt
 Lori Walker
 Mary Walser
 Sally Webster
 Craig Weflen
 E. Thomas and Rita Welch
 Mary and Donald Weller
 Carol Westberg
 Linda Westenberg
 Steven Wickstrom and Bonnie DeGroot
 Beth Widstrom-Anderson
 Emily Williams
 John Windhorst
 Margaret Wirth-Johnson
 Terry and Susan Wolkerstorfer
 Peter and Sue Wyckoff
 Jane Young
 Susan and Rod Zemke

HISTORIAN

\$100 – \$249

Anonymous (13)
 Kathleen and Melvin Aanerud
 Grant Abbott
 Carolyn M. Adams
 Kay Alberg
 Raymond and Kittie Alexander
 Anita Anderson
 Greg Anderson
 Lynn Anderson
 Harriet Angell
 Robert Anholt and Ann Waltner
 Nina Archabal
 Michael and Diana Ash
 Carol and Stephen Askew
 Annette Atkins and Tom Joyce
 Edwin Baehler
 Doris Balzley
 Dorothy Baker
 Judy and Dan Bakken
 Thomas Barber
 Denise Barnett
 Cynthia Baubie
 Jim and Molly Bauer
 Barbara Baum
 Judith Beck
 Bruce Behrends
 Susan Belland
 Barbara Benner
 Lynne Benz
 Linda Berglund
 William Berneking
 Bonnie Beverly
 Kim Bingham
 John Claude Biringier
 Barbara Bittman
 Margaret and David Bjork
 Rose Block
 Kathy Blomquist
 James Bona
 Linda Born
 Patricia and Roy Bower-Jernigan
 Evelyn Brabec
 Barry and Janet Brähler
 Connie Brazier
 Lorna Breiter
 Bruce and Paulette Briese
 Irene Bugge
 Lou and Maureen Bushard

THANK YOU INDIVIDUAL DONORS

Karen Buytaert
 Marilyn Cantisano
 Elsa Carpenter and Barney Barton
 Terri Cavanaugh
 Kate Cavett
 Teresa Cerling
 Amelia Cheever
 Lisa Chen
 Mary Ann Cheng
 Steve Chirhart
 Amber Christian
 David and Kathleen Christenson
 David and Michelle Christianson
 Kevin and Sue Clark
 Patricia Clarke
 Deb Clemmensen and Jon Pratt
 Scott F. Clugston
 Phyllis Conlin
 Judith Conrad
 David Cooley and Catherine Demars
 Glenn and Nan Corliss
 Thomas and Barbara Costello
 Shari and John Couch
 Trudy and Charles Cowman
 Mike Cullen
 Carol Cummins
 Laurie and David Dahl
 Allison Dahlin and Jacob Zeiher
 Barbara Davis
 Jo Davison
 Patrick Dawson
 David and Helen Dechaine
 Helen Dechaine
 Dan Delaney
 Meg DeLapp
 Dennis and Nickie Dillon
 Cheryl and Barry Divine
 Joe and Genie Dixon
 Sean Dooley
 Susan Dragsten
 Theresa Dressler
 Ian Drummond
 Dorothy Edelson and Dan Japontich
 Ronald Eggert
 Angie and Mark Eilers
 Amy Elverum
 Linda Engberg and Sharon Neal
 Laurie Engel
 Steve Fuller
 J. Featherstone
 Bruce Field
 Theresa Fleming
 Ferris Fletcher
 Jack Flynn and Deborah Pile
 Joann Frankena
 Daryl and Joan Franklin
 Joan Fredeen and Joan Fedeen
 Mary Fredenburg
 Kathryn Freimuth
 Cheryl Frenette
 Tom Fridinger
 Deb Frishberg
 Michael Fronk
 Cathy and Nat Fuller
 Patricia Gaarder
 Jeanne Gadbois
 Susan and Jay Gans
 Elizabeth Garren
 Gayle Garrity
 Gayle Gaskill
 Denise Gathman
 Cheryl and Jim Gelbmann
 Lois Gernbacher
 Heidi and Howard Gilbert
 Rodney Gilles
 Sue Gilsdorf
 Valy Goepfrich
 Loran and Judy Goff
 Nancy Goldman
 Mary S Goldstein
 Laura Goodman
 Jim and Becky Goodwin
 Heidi Graham

Claire and Jim Graupmann
 Cathy Gray and Michael Mallory
 Kathy Gremillion
 Mary Grina and Scott Peters
 Vicky Gron Dahl
 Jennifer Gross
 Richard and Erin Gross
 Dick Gross
 Catherine Grotenhuis
 Barbara Hall and Tom Ray
 Chari Hall
 Wayne and Cathy Hamilton
 Shawn Hamilton
 Elizabeth Hampton-Artmann and Terry Artmann
 Patricia Hanauer and Thomas Teeter
 Robert Hand
 Robyn Hansen and John Clarey
 Brenda and Mark Hansen
 Robyn Hansen
 Jan Haugland
 David Hawley
 Gorden Hedahl
 Steve Hendrickson
 Eric and Chris Herr-Madsen
 Sandy and John Hey
 Elise Hilton
 Denise Hinton
 Elfrieda Hintze
 Pamela K Hinz
 Mark and Lynda Hirschboeck
 Laurel Hofeldt
 Alan and Judy Hoffman
 Robert and Judy Horn
 Lee and Judy Houck
 Jim and Janelle House
 Keith and Karen Hovland
 Ansel Howard
 James Howard
 Nadine Hunt
 David Hunter
 Linda Huwe
 Michael Ireland
 Nora Ivory
 Pearl Mitchell Jackson
 Robert and Nancy Jackson
 Barbara Janssen
 Bonnie and Michael Jellinek
 Tim Jessen
 Patricia Johnson and Mark Gronlund
 Mark Johnson
 Michelle Johnson
 Mary A Jones
 Sally and Charles Jorgensen
 James Kaplan
 Alfred and Sharon Kauth
 Pamela and Jeremiah Kearney
 Kent and Kathy Kehrberg
 Stan Keillor
 Anita Kennedy
 Bernard Kennedy
 Lee and Gary Kilgard
 John Kingrey
 Mavis Klemmensen
 Mary Lou and Roger Klinkhammer
 Robert and Nancy Kloehn
 Scott and Deb Knight
 Karen Knott and Soni Olson
 Bonnie Koch
 Kathy Kohl
 Janis L Konke
 Joe and Kathy Kovarik
 Terri Kruger
 Esther Krueger
 Susan Krueger
 Donald Kryzer
 Linda Kucera
 Debra Kuehne
 Bryan Kufus
 John Kufus
 Peter Kuzj
 Theodore and Elaine Kvasnik
 Laurie Lafontaine

Karen and William Lake
 Karla Lancaster
 Kathleen Lander
 Lorna Landvick
 Vic Langer
 Mary Langlois
 Russell Lausen
 Pat Lawrence
 Carol and James Leduc
 Kristie Lester
 Diana Lewis
 James Lewis and Bill Bloedow
 Don and Lori Lifto
 Dorothy Lilja
 Midge Lilja
 Stacy Lindell
 Jo and Paul Livgard
 Julian Loscaszo
 Pamela Lott
 Edward and Betty Louis
 Jeanne Lucio
 Mark and Rebecca Lystig
 Mike MacDonald
 Kathryn Madson
 Beth and Steve Magstad
 Victoria Mahoney
 Patricia and Gary Mahre
 Tony and Alice Maistrovich
 Barbara Malamen
 Marc and Kathy Manderscheid
 Susan Maples
 Joan Marks
 Thomas Martin
 Sara N Martineau
 Julene Maruska
 Jeff Masco
 Karmi Mattson
 Betty and Matthew McConnell
 Claire McCoy and James Stoops
 Eileen McIsaac
 Barbara J McKernan
 Susan McKnight
 Allen McNee and Casey Quinn
 Bruce and Kay Melemed
 Rita M. Meyer
 Peter Michaud
 Jim and Kim Michels
 Jane Middlestadt
 Dan and Alice Mikel
 Margie Miller
 Theresa Mish
 Andy Moble and Lori Kimmet-Moble
 Jean Montgomery
 David Moody and Mary Catherwood
 Jolene Moore
 Jolene Morgan
 Dean and Jane Moren
 Cindy and Ron Moynihan
 Patrick and Joyce Moynihan
 Julie Mulligan
 Bob Muschewske
 Lynn Nankivil
 Bonnie Nelson
 Claudia and Jerry Nelson
 Randy and Joy Nelson
 Anthony Nerud
 Jim and Mary Ellen Nichols
 Roger and Amy Nieboer
 Oliver Niesewand
 Peter and Lori Nowacki
 Gary Nygaard
 Alta Oben
 Rosalie and James O'Brien
 Ray and Mary Ann Ogden
 Cynthia Olsen
 Jan Olson
 Karen Olson
 Margaret Olson
 Richard Olson
 Lynette O'Pray
 Bonnie Ostlund
 David and Marilyn Palmer
 Bonnie Palmquist

THANK YOU INDIVIDUAL DONORS

Lowell and Finola Parsons
 Brian and Garneth Peterson
 Gordon and Dawn Peterson
 Diane and Kent Peterson
 Judith and James Peterson
 Scott and Heidi Peterson
 Michelle Pett and Eric Britt
 John Pfaff
 Renee Pfening and Wayne Bjorlie
 Katie Phillips⁹
 Daniel Pinkerton and Jane Johnston
 Laurel Porter
 David and Karen Prettyman
 Jane Prohaska and William Donohue
 Marie Prottengeier-Smith and Bruce Smith
 Jan M. Puffer
 Debra Que
 Rita Quigley
 Urho and Pamela Rahkola
 Susan and James Ramlet
 Bill and Donna Ramsay
 Tom and Laura Rasmussen
 Thue Rasmussen
 Maria Reamer
 Deborah Rechnagel
 Judy Reeve
 Trista Rehnke
 Richard and Keely Remedios
 Shannon Rhatigan
 Mary Lou Rice
 Patricia Rice
 Theresa Robinson
 Kathleen Roer and Kurt Boerner
 Brenda Rohde
 William and Judith Rohde
 Laura and Jeff Ronbeck
 Cheryl Rose
 Diane Rosga
 Rodney Rowe
 Steve and Karen Rudd
 Rosa Rummel
 Lynn and Tom Rusch
 Tim Russell
 Sally Ruvelson
 Deborah Salerno
 Nancy Sampair
 Therese Samudio

Virginia and Wayne Sanderson
 Mark Savin
 Susan and Mark Schaeffer
 John Scheele
 Pam Schmidt
 Karen Schneewind
 Jane and Gary Schroeder
 Ronald Schulte
 Tom and Deb Frishberg
 Nancy Scott and David O'Connor
 David Secord
 Nancy and Raymond Seeger
 Sharon and Stephen Segal
 Wendy Short-Hays
 Janis Sines
 Sue Singer
 Jon Skaalen
 Mark and Carol Sletner
 Elaine Sloan
 Kelly Smith
 Kelli Snyder
 Linnea Sodergren
 Kathy Solberg
 Kathryn and David Sorensen
 Linda Spiess
 Jaclyn Sprtel
 Gary and Vicki Staples
 Gary Stenson
 Erica Stern
 Stephanie A Stoessel
 Kenneth and Pamela Stofferahn
 Monika Strom
 Judy Stuthman
 Robert and Mary Super
 Gary and Liz Swedberg
 Barbara and Zbigniew Szeborowski
 Judy Takkunen
 Patricia Tennyson
 Beverly and Edwin Thiede
 John and Jan Thames
 Daphne Thompson
 Harv Thompson and Richard Klemm
 Janice Thorp
 Thrivent Financial Foundation Gift-Matching
 Program
 Alex and Kayla Tiede
 Mary Kaye and Mike Tillmann

Richard Todd
 Donald Toivola
 Judy Trousdell
 Laura Trudeau
 Mary Uram
 Jane Vanderpoel and Kevin Gutknecht
 Catherine Vesley
 Karen Vinje
 Kristin Von Seggern
 Jane Wachutka
 Natalie Waechtler
 Carol and Ray Waldron
 Ann Walters and Elizabeth Langer
 Leslie Watkins and Doug Larson
 Thomas Wells
 Paula J Welte
 Mark and Deborah Werner
 Martha West and Karen Smith
 Janice Weum
 Johnathon White
 Barbara Whiting
 Paul and Holly Wick
 Cornelius and Betty Ann Wiens
 Susan and John Wiik
 Christopher Williams
 Patricia Williams
 Martha Wilson
 Linda Wilson and D. J. Leary
 Jeanne Winiecki
 Katherine Wipperling
 Le Donna Wistrill
 Mary Kay Wittgenstein
 Wendy Worner
 Judith Wright
 Ben Wright
 Barbara Wyld
 Stephen Youlan
 Jodi Young
 Richard and Carolyn Young
 Anna Zeisel⁵
 Louise Ziegler
 Kathleen Ziemann
 Mark and Penny Ziessman
 Susan Zietlow
 Jo Zimmermann
 Jeanne and Ronald Zirbel
 Sue Zuidema and Jack Jenkins

S - Staff B - Board Member D - Deceased



Thank you for supporting History Theatre

Make a tax-deductible contribution and ensure everyone can witness history this season at History Theatre!

Please visit historytheatre.com/donate

Thank you!

Contact Doug Tiede,
 651-292-4327

dtiede@historytheatre.com

BOARD OF DIRECTORS AND STAFF

BOARD OF DIRECTORS

PRESIDENT	John Sebastian	
Vice President	Candace Campbell	
Treasurer	Tyler Zehring	
Secretary	Lois Duffy	
John F. Apitz	Jessica Looman	Kenneth Schaefer
Dave Beehler	Cheryl L. Moore	Jennifer Simek
George Dow	Kera Peterson	Charles A. Slocum
Michele Kelm-Helgen	Katrina Philips	Pondie Nicholson Taylor
Susan Kimberly	James Rollwagen	Dr. Jon Thomas
Gene Link		

STAFF

ARTISTIC DIRECTOR	Ron Peluso *‡
Producing and Directing Associate	Richard D. Thompson
Interim New Works Associate	Laura Leffler
Production Manager	Wayne Hendricks*
Technical Director	Gunther Gullickson
Master Electrician	Nick Walberg
MANAGING DIRECTOR	Karen Mueller
Administrative & Marketing Manager	Ashton Schneider
Education Manager	Paul de Cordova*
Financial Consultant	The Mobius Group
IT Consultant	Computer Whatever
Development Director	Doug Tiede
Development Assistant	Faith DuBose
Development Intern	Mia Scott
Development Contractor	Anna Zeisel
Grant Writer	Jessica Huang
Audience Development Director	Chari Hall
Group Sales Manager	Craig Cerrato
Box Office Associate	Daniel Evans
Front of House	Susan Biales, Monique Franson
	Anne Hammel, Lauren Woessner
Marketing Director	In-Fin Tuan
Graphic Designer / Web Developer	Rocketfish
Photographer	Rick Spaulding
Videographer	Pedro Juan Fonseca, Gary Bingner

History Theatre entertains, educates, and engages

audiences by creating, developing, and producing new and existing works that explore Minnesota's past and the diverse American experience.

history theatre

Jen Marek as Marjorie

Best Theater
of the Decade!
Star Tribune

Glensheen

book by Jeffrey Hatcher
music and lyrics by Chan Poling

**Cast
Favorites
Return!**



Ivey Award-Winning Hit Musical
Returns July 9

Reserve your seats today!

651-292-4323
historytheatre.com

**Great
Group Rates!**
Call 651-292-4320
BEST TICKET PRICES
for 10 or more