

HUNGRY LIKE THE WOLF

By SANDRA STRUTHERS

Directed by Laura Leffler

March 19-April 12, 2026

history theatre

history theatre

ANNUAL BENEFIT

Theater That Celebrates!

ESSENCE EVENT CENTER
JUNE 25, 2026

Save the Date!

history theatre
PRESENTS

2026 MUSIC CONCERTS

JOIN US FOR ONE CONCERT OR EXPERIENCE THEM ALL!



THE BEST OF
BROADWAY BELTERS & A BAND
with Jen Burleigh-Bentz
April 18, 5 pm



GARY RUE PRESENTS
**BUDDY HOLLY:
OH BOY!**
with Nicholas Freeman, Zach Spicer,
Blake Foster & more!
August 8, 7pm

651-292-4323 | historytheatre.com



Laura Leffler
Artistic Director

As a student of theatre history, I'm always delighted to pull into my work references to historical theatrical forms.

And hooo boy, is this production a playground for such. Acting, schmacting, personal narrative storytelling, clowning, parody, dropping the 4th wall, and even a touch on Greek theatre methods. Oh, so much to revel in!

So as you settle in to enjoy this ferocious pastiche, I hope you are on the edge of your seat, leaning in, ready to laugh, learn, and open wide your empathy and hope.

Showing up in a public space to witness a live event is always wonderful – and such an expression of humanity, social animals as we are. Especially right now – in the Twin Cities in the spring of 2026 – being in community, sharing experiences, and unifying – it feels right.

Sandra's play is wacky and wild, but it's also down-to-your-bones powerful. Upon my first reading of a draft of this script, all those years ago, I was drawn in by the strength of telling often untold truths. Thank you for being here to observe, witness, and join in the telling.

Truly and deeply – thank you for being here.

Tell your friends.



Karen Mueller
Managing Director

Welcome to History Theatre.

We're so glad that you have come to see *Hungry Like the Wolf*, a new play that revisits events from the 1980s with a healthy dose of pop culture and fierce humor. This story, rich in humor and nostalgia, also explores profound and serious themes that have shaped society. Our shows always strive to entertain, educate, and engage – and we know this one will, too.

Please mark your calendars for exciting events coming your way. We invite you to an unforgettable evening on April 18, where the enchantment of Broadway will be brought to life by the incredible Jen Burleigh-Bentz in *The Best of Broadway Belters*.

Be sure to save the date for our annual benefit, taking place at The Essence Event Center on June 25. Be part of this lively celebration, featuring live music, captivating performances by History Theatre artists, and delightful selection of food and drinks. We invite you to join us in championing our unique mission of bringing history to life on stage at our summer soiree.

Your support for live theater and your presence are truly valued. Thank you for joining us this evening, and we hope to see you soon. Enjoy the show.

HUNGRY LIKE THE WOLF

Written by
SANDRA STRUTHERS

Directed by
LAURA LEFFLER+

Scenic Designer
SARAH BAHR#

Properties Designer
URSULA K. BOWDEN

Costume Designer
RUBBLE & ASH

Lighting Designer
KARIN OLSON#

Video Designer
LESLIE RITENOUR

Sound Designer
MONTANA JOHNSON

PRODUCTION TEAM

Dramaturg..... **Alayna Jacqueline**
Stage Manager **Stacy McIntosh***
Assistant Stage Manager **Gianna Haseman**
Intimacy and Fight Choreographer **Annie Enneking**
Vocal Coach..... **Caleb Byers**
Assistant Sound Designer **Bailey Fenn**
Technical Director **Gunther Gullickson**
Master Electrician **Nick Walberg**
Stage Electricians **Ariel Bodnar-Klein, Favour Donbraye, Chase Foster Adams,
... Parker Love, Johnna Johnson, Mags Scanlon, Bevibel Harvey, Kai Manis, Kate Peters**
Scenic Supervisor **John Lutz**
Scenic Charge..... **Erika Soukup**
Carpenters..... **Phong Mai**
Open Captioner **Shelia Bland**
Audio Describer **Elana Centor**
ASL Interpreter..... **Linda Gill, Nella Titus**



* Appearing through an agreement between History Theatre and Actors' Equity Association, the Union of Professional Actors and Stage Managers in the United States

+ Member, Stage Directors and Choreographers Society, Inc.

• Member, Twin Cities Musicians Union Local 30-73, American Federation of Musicians

Member, United Scenic Artists Local #829

^ Member, International Alliance of Theatrical Stage Employees

U Understudy

WHO'S WHO

THE CAST

(in alphabetical order)

Lee Grant/Francoise/Ensemble.....	Jen Burleigh-Bentz*
Man/Ensemble	Sam Landman
Glennis/Valerie/Ensemble	Jen Maren*
Sandra	Sandra Struthers*
Simon LeBon/Irene/Ensemble	Allison Vincent

THE UNDERSTUDIES

Man/Ensemble.....	David Beukema*
Sandra	Amanda Forstrom
Glennis/Valerie/Ensemble	Jane Froiland*
Lee/Francoise & Simone/Irene	Andrea Wollenberg*



JEN BURLEIGH-BENTZ*



SAM LANDMAN



JEN MAREN*



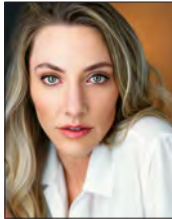
SANDRA STRUTHERS*



ALLISON VINCENT



DAVID BEUKEMA* U



AMANDA FORSTROM
U



JANE FROILAND* U



ANDREA WOLLENBERG* U

SETTING

1977, Willmar, MN; 1984, Edina, MN;
New York City, 2018; and probably everywhere, and also, now

THE PERFORMANCE RUNS 115 MINUTES WITH A 15-MINUTE INTERMISSION

Scene 1 First Impression: The Rosary
Scene 2 Is There Something I Should Know? Orientation 1
Scene 3 Girls on Film: TV Movie Opening
Scene 4 My Own Way: How Did This Play Come About?
Scene 5 Femme Fatale: We Meet Lee
Scene 6 Save a Prayer: To Be Wife Is to Submit
Scene 7 Matter of Fact: Orientation Part 2
Scene 8 Anything For You: I Love Duran Duran
Scene 9 Ball of Confusion: The Movie Was... Really Bad
Scene 10 Zoom In: We Meet The Legend
Scene 11 All She Wants Is: Wheel of Fortune
Scene 12 Friends Of Mine: Women Support Each Other Financially
Scene 13 Is There Anyone Out There?: The Search for Lee
Scene 14 Ordinary World: On the Picket Line
Scene 15 Of Crime and Passion: Books From the Library
Scene 16 Lonely In Your Nightmare: The Cold
Scene 17 Shelter of My Heart: What Kept Them Going
Scene 18 Boys Keep SwingING: And Yet, They Persisted
Scene 19 Drive By: Unions and First Jobs
Scene 20 Dream Nation: Banking & Investment Strategy
Scene 21 A Matter of Feeling: Lee Says Yes to Everything
Scene 22 When You Come Undone: Bingo and the Dreaded Mr...
Scene 23 Cracks in the Pavement: What the Bleep?
Scene 24 The Wild Boys: They Tried to Break Us
Scene 25 A View to Kill: A Very Special Episode
Scene 26 Last Chance on the Stairway: Time's Up

CONTENT DISCLOSURE

This production contains simulated smoking, themes of sexual harassment, sexual abuse, and domestic assault.

PLAYWRIGHT



I wrote this play several years ago, during the Kavanaugh hearings. I had been researching the piece for months before I wrote it, but the weekend of writing was inspired by my need to process thoughts and feelings about what was happening at the time.

I hope this play can open conversation not only about women's historic fight for justice and equality, but also about how to best move forward from where we are currently. I believe there are ways to navigate social challenges, so that forward movement feels like a cooperative evolution of societal consciousness, as opposed to merely shifting power within existing, traditional structures. Existing social structures--ones that depend on power imbalances, hierarchies, and exploitation--don't serve our community. I

offer the question: Is there a way to create systems that are more fair, and that value all members of society? Can we uplift patience, kindness, fairness, creativity, and curiosity in this quest?

When discussing social change, I believe we must be vigilant that the discussion not devolve into rigid power struggles, and allegiance to black-and-white views of the world. I admire the work of so many women who came before me (particularly black and indigenous women, and, of course, the Wilmar Eight) who kept their hearts open, their minds flexible, their values in the driver's seat, and chose kindness in the face of oppression while working to build a more-loving world.

I included personal vulnerability and my own experience wrestling with these issues, because I think many of us are grappling and don't have the answers. Hopefully my personal sharing helps others feel seen and feel less alone. I may not have all the answers, but I am certain that sharing stories and finding fellowship heals and uplifts us all.

Thank you for being here and engaging in the conversation. Each and every one of you has an important voice. Especially Simon.

-Sandra Struthers, *Playwright*

SPECIAL THANKS

The 2024 Raw Stages workshop team: Tracey Maloney, Addie Phelps, Luverne Seifert, Angela Timberman, Allison Vincent, and Cat Hammond, UMTAD, The Costume Collective, Shanan Custer, MJ Leffler, Josef Evans, and the Willmar 8: Doris Boshart, Irene Wallin, Sylvia Erickson Koll, Jane Groothuis, Sandi Trembl, Teren Novotny, Shirley Solyntjes, and Glennis Ter Wisscha, Jeffrey Hatcher, The Sweeney Family, Peter Radcliffe, Willmar Historical Society, Mathilde Dratwa, Jeremy Cohen, all of the helpers.

Q&A WITH DRAMATURG & DIRECTOR

Frequent collaborators Alayna Jacqueline (AJ), dramaturg, and Laura Leffler, (LL) director, discuss working on *Hungry Like the Wolf* together.

LL: *What has been most exciting or unique for you?*

AJ: I am really into logic puzzles. I feel this play—because there are a lot of threads and pieces—is a fun puzzle to play with. Thinking about how each moment affects the audience's journey and what they're holding on to? It's fun.

AJ: *How do you make sure that those moments are clear and feel purposeful?*

LL: We're trying to pick the things that make something very iconic. There's a Wheel of Fortune on stage, and we're not going to build that giant wheel. So, what are the things that are with you when you watch? Theme songs, the sound of the ticker clicking along as the wheel spins, and Pat Sajak and Vanna White. How do we lock into the essence of Wheel of Fortune, and fast?

AJ: *You've brought up pacing. What has been the biggest challenge knowing that the comedy and story really hinge on speed?*

LL: You talked about the logic puzzle. For me, it's a logistical puzzle. How do we make sure the pace is fast enough to hit? We set the prop in the right place so that it's ready at the right moment and that it's also ready for the next time it's used. Maybe that's the quick way to explain a dramaturg and a director. The dramaturg is the "why," and the director is the "how."

AJ: And with that why and how, we know: the pace helps make it funny. **LL:** Yes! Quick like a bunny!

AJ: Just sitting around a table reading and talking about the script, there was a lot of brainstorming, what could happen, what we could do, and we weren't even near [the actors] being on their feet, and it was still funny.

LL: *We've been laughing a lot. Also shaking our fists at the sky, and crying, and raging. But a lot of laughter. And that feels good, you know? It's healing.*

AJ: It is. Especially with this cast, who seem to all know each other from before.

LL: This cast has been on our stage before, so there's a familiarity with the audiences here and the space, and that's lovely to lean back upon, because comedy is hard.

LL: *Shanan Custer says comedy is opera. And I think she's right, that there's so much about it*



ALAYNA JACQUELINE



LAURA LEFFLER

that seems so effortless. But there's so much that goes into building it! So, then you can pull it off in a way that makes it feel super easy.

AJ: The style of comedy is different than what's been done on the History Theatre stage. I'm really excited for people to see this side of this cast in very different roles than usual.

LL: *Me too. Here's Jen Maren and Jen Burleigh-Bentz on stage, and they're not really going to sing, you know?*

AJ: Speaking of singing, we do get a little bit of singing because of the songs that are in here, the striker songs.

LL: The union songs. Yes. But we've been careful to tone down the Broadway voice and just sing like a regular person.

AJ: *It's a play with music. Not only the striker songs, but '80s pop music is super important throughout it. I am only familiar with certain 80s music; I had to go back and really realize, oh, there are a lot of songs in here and, like, song titles that are jokes.*

LL: There are so many fun Easter eggs for the Gen X audience. But also, for the Boomers and Gen Zs, there's so much that is universal that you'll get it, even if you don't catch every single reference.

AJ: *This show is giving Gen X their flowers. It is very 80s. And it's interactive as well, which I think is something that was really big and coming in the '80s, of, like, even with television starting to play with breaking the fourth wall to joke with the audience about breaking the 4th wall and those types of things. It's a collage of '80s TV and '80s culture and pop culture. We get to see how this '80s pop culture can be used to tell how things before the '80s still resonate with things that are happening today.*

LL: That's what we try to do with every History Theatre show. Yes, it's the 1850s, and it's relevant today. It's WWI, and it's still relevant. It's the 1980s, and it's relevant today.

THE CAST

THE CAST

DAVID BEUKEMA* (he/him)

u/s Man/Ensemble

History Theatre: *American Golem* (Raw Stages 2025).

Theater: *Old Log Theater: Million Dollar Quartet, A Gentleman's Guide To Love and Murder, Lend Me a Tenor*; Park Square Theatre: *School For Lies, Johnny Baseball*; Artistry: *Legally Blonde, Talley's Folly*; Frank Theatre: *The Resistible Rise of Arturo Ui*; Theatre L'Homme Dieu: *I'm Proud of You*; Rochester Civic Theatre: *The Importance of Being Earnest*; Girl Friday Productions: *The Matchmaker, Street Scene*.
Training: BFA, Acting, Otterbein College.

JEN BURLEIGH-BENTZ* (she/her)

Lee Grant/Francoise/Ensemble

History Theatre: *Beyond the Rainbow, Hormel Girls, Working Boys' Band, Christmas of Swing (3x), A Servants' Christmas, The Defeat of Jesse James.*

National Tour: *Cheers: Live on Stage, Buddy: The Buddy Holly Story, Miracle on 34th St.* **Regional:** Ordway, Guthrie, Chanhassen, Artistry, Duluth Playhouse, Broadway on the St Croix, Zephyr, Minnetonka Civic, Mixed Blood, Casting Spell Prod., Cardinal Theatricals, Jon Hassler, Lake Pepin Players, etc. **Other:** Nationally toured *Yesterday Once More - Songs by the Carpenters*; Recordings: *Coming Home for Christmas - John Tronzo, You Are Home: Songs of Anderson-Petty, I Do: Anderson-Petty*. **Training:** BS, Comprehensive Theatre Arts-UWEC. **Upcoming:** Monthly JBB 'n Friends Cabaret, MetroNome Brewery, Vocalist for Star of the North Jazz Orchestra, "The Best of Broadway Belters and A Band with Jen Burleigh-Bentz" at History Theatre April 18! Thanks to HT for continuing to cultivate and produce new works; love to M&D. jenburleigh-bentz.com

AMANDA FORSTROM (she/her)

u/s Sandra

History Theatre: Debut. **Theater:** Off-Broadway: *The Irontale Ensemble: Julius Caesar, Color Between the Lines*. **Regional:** Arena Stage: *Junk*; Folger Theatre: *Timon of Athens, Sense and Sensibility, Julius Caesar, Twelfth Night*; Shakespeare Theatre Company: *Tartuffe*; Round House Theatre: *Miss Bennet: Christmas at Pemberley*; Ford's Theatre: *Lincoln's 150th*; Cape May Stage, NJ: *The Lion In Winter*; Virginia Shakespeare Festival: *Hamlet, Cymbeline*; Chesapeake Shakespeare Company: *Measure for Measure*; RhinoLeap, NC: *Company K* and others. **Local:** Theatre L'Homme Dieu: *Clue*; Sidekick Theatre: *Perfect Wedding*; Bad Mouth Theatre Co: *Moderation*; Walking Shadow Theatre Co: *Red Speedo*. **Other:** VO: *Morrigan* in the ACOTAR series, and *Rosabelle* in the *Watch Me*. **Film/TV:** *Move Me No Mountain*; *Kringle Time*, *Bennie's*. **Awards:** 2025 Audie Award, multiple Helen Hayes Award noms. **Training:** MFA, University of South Carolina. IG: @amanda_forstrom; @badmouthtc

JANE FROILAND* (she/her)

u/s Glennis/Valerie/Ensemble

History Theatre: *Behind the Sun*. **Theater:** Guthrie Theatre: *Murder on the Orient Express*; Park Square Theatre: *The Revolutionists, The Diary of Anne Frank, Of Mice and Men, The Realistic Joneses, To Kill a Mockingbird, Rock-n-Roll*; Children's Theatre: *20,000 Leagues Under the Sea*; Jungle Theatre: *Who's Afraid of Virginia Woolf, Christmas at Pemberley* (u/s); Ten Thousand Things: *Doubt*; Mixed Blood Theatre: *An Octooroon*; Gremlin Theatre: *The Thin Place, Rocket to the Moon*; Yellow Tree Theatre: *Steel Magnolias, The Miracle Worker*; Old Log Theatre: *Jeeves in Bloom*; Dark and Stormy Productions: *The Maids, The Norwegians*; Frank Theatre: *Revolt, she said, Revolt Again*; Walking Shadow Theatre: *Marie Antoinette, Compleat Female Stage Beauty*. **Other:** TV: *Documentary Now!, Me Hereafter*. **Awards:** Ivey Awards - *Doubt, Compleat Female Stage Beauty*; 2023 Twin Cities Bloggers Award, Best Actress in a Drama, Best Actress in a Drama by Lavender Magazine. janefroiland.net @janefroiland.

SAM LANDMAN (he/him)

Man/Ensemble

History Theatre: *Superman Becomes Lois Lane, Fireball, Axel & His Dog*. **Theater:** Theatre Pro Rata: *Three Sisters, Killer Joe, Trainspotting*; Winding Sheet Outfit: *Stabby Stab Stab, The Life & Death of Edward Lear*; Special When Lit: *Incarname, Finger Lickin' Good*; Girl Friday Productions: *Life Sucks, Skin of Our Teeth, Idiot's Delight, Camino Real, Street Scene*; Yellow Tree Theatre: *One Man, Two Guvnors*; Jungle Theater: *Blithe Spirit*; Park Square: *Noises Off*; Loudmouth Collective: *Waiting for Godot, Thom Paine (Based on Nothing)*; Artistry: *Alfred Hitchcock's The 39 Steps, The Odd Couple*; Torch Theater: *Boeing Boeing, Prints*; Troupe America: *How To Talk Minnesotan*. **Other:** HUGE Improv Theater + Brave New Workshop: *Family Dinner* (long form improv); Strike Theater: *Wish You Were Here* (long form improv), *Holiday Office Party* (long form improv). **Film:** *Dead Media, Good Sport, Midnight Chronicles*. **Episodic TV:** *Lady Dynamite, The Killer Next Door - John Wayne Gacy, I Was There - Chernobyl, Law & Order: Criminal Intent*. **Upcoming:** *Bury The Leads* (a two-person improv show about character actors) to Green Bay Fringe and Minnesota Fringe this summer. @slandman + @burytheleads + @plaza_del_mall.

JEN MAREN* (she/her)

Glennis/Valerie/Ensemble

History Theatre: *Glensheen, The Boy Wonder, Lord Gordon Gordon, The Root Beer Lady* (u/s), *Nellie, The Christmas Schooner*. **Theater:** Guthrie Theatre: *The Sunshine Boys*; Ordway Theatre: *Beauty and the Beast* (u/s); Gremlin Theater: *Bakersfield Mist*; Penumbra Theatre: *The Wedding Band*; Mixed Blood: *Love Person*; Illusion Theater: *My Antonia*; Park Square Theatre: *Rock-n-Roll, Panic, 33 Variations*. **Other:** Looney Lutheran Company



National
New Play
Network



The Oregonian is a member of the
STAGE DIRECTORS AND CHOREOGRAPHERS
SOCETY - a national theatrical labor union.

* Appearing through an agreement between History Theatre and Actors' Equity Association, the Union of Professional Actors and Stage Managers in the United States
^ Member of the Stage Directors and Choreographers Society, Inc.
Member of Twin Cities Musicians Union Local 30-73, American Federation of Musicians
Member of United Scenic Artists Local #629

THE CAST / THE CREATIVE TEAM

member; Science Live Theater member; Audible Audiobook narrator, Audio Description narrator. **Awards:** Ivey Award Best Overall Performance, Glensheen. **Training:** B.A. Theater Arts, St. Olaf College; British American Drama Academy, Oxford, England. jenmaren.com IG: @jenact

SANDRA STRUTHERS*

Sandra, Playwright

History Theatre: *Glensheen, Radio Man, The Paper Dreams of Harry Chin, The Gangster Musical, Under the Stars and Stripes.* **Theater:** Guthrie Theater, Mixed Blood Theatre, Ten Thousand Things, Children's Theatre Company, Old Log Theatre, Yellow Tree Theatre, Park Square Theatre, Theater Latté Da, Frank Theatre, Wonderlust. **Regional and Off Broadway:** Mint, Studio 42, Actor's Theater of Louisville, Alabama Shakespeare Festival, Walnut Street, Baltimore Center Stage, Shakespeare Theater of DC, Virginia Stage, ART. **Playwriting:** *Author Author* (co-written with Jeffrey Hatcher), *Ride or Die: a Post-Apocalyptic Three Sisters.* **Other:** Taught storytelling for *The Moth* (New York, Cape Town), and theater skills. She is also a practicing psychotherapist. **Training:** MFA Harvard/MXAT, BA Wesleyan U. sandrastruthers.com

ALLISON VINCENT (she/her)

Simon LeBon/Irene/Ensemble

History Theatre: *WHOOSH!, Christmas of Swing.* **Theater:** Directing: *Walking Shadow: FEAST, Mae West and the Trial of Sex; Dark & Stormy: The Physicists, The Prime of Miss Jean Brodie;* The Playwright's Center: *Spukhaus, Yawp;* Minnesota Fringe: *Daddy Issues, Edith Gets High, WHOOSH!;* The Hive: *Loudly, Clearly Beautifully;* TC Horror Festival: *A Morbid History of Sons and Daughters;* UMN: *Depth, This Little Piggy Went to Hell.* Acting: *Transatlantic Love Affair, Four Humors, The Illusion,* Playwright's Center, Park Square, The Jungle, Frank Theatre, Mainly Me, Ladybrain, HUGE, Strike, Jon Ferguson, *Walking Shadow, Sod House, Black Label Movement, The Winding Sheet Collective, Artistry, Theater Novi Most.* **Other:** Teaches UMN, Augsburg. **Awards:** 2025-27 Jungle Emerging Artistic Leadership cohort,

MISA Residency, Everwood Farmstead Residency, 2026 Creative Individuals Grant Recipient, UMN Outstanding Alumni Award, 2022 Naked Stages Fellow, Ivey Awards- *Ballad of the Pale Fisherman,* Wit, Golden Lanyard recipient for the MN Fringe - *Daddy Issues, WHOOSH!, 5x5, Edith Gets High.* **Training:** BA, M.Ed. UMN. **Upcoming:** (directing) *Walking Shadow: FEAST;* (writing) *Wonderlust Productions: Hidden Herald Season 3;* (acting) *Park Square Theatre: The Butler Did It.* Thanks to Leslie Vincent for her constant support and Mark and Pete from 7th Street Barbers in St. Paul for cutting around the Simon Le Bon hair for a few months.

ANDREA WOLLENBERG* (she/her)

u/s Lee/Francoise & Simon/Irene

History Theatre: *Coco's Diary, Complicated Fun, Watermelon Hill.* **Theater:** Guthrie Theater: *Mr. Burns: a post-electric play* (co-prod with A.C.T.), *Top Girls;* Ordway: *Cinderella;* Children's Theatre Company: *Cinderella;* Park Square Theatre: *Murder For Two, A Midsummer Night's Dream, Anna in the Tropics, Enchanted April;* Old Log Theatre: *Cowgirls;* Artistry: *Mary Poppins; Sod House Theater: Hoopla Train; Paul Bunyan Playhouse: Seussically, Oklahoma!, The Robber Bridegroom, Proof;* Jon Hassler Theater: *Proof, Bordertown Cafe; Hey City Theater: Tony n' Tina's Wedding.* **Regional:** Brooklyn Players: *Torch Song Trilogy;* St. Michael's Playhouse: *Educating Rita, Into the Woods;* Williamston Theatre, MI: *Murder For Two, Murder For Two Holiday, An Evening with Bill Irwin.* **Training:** MFA, University of Virginia, BA St. Olaf College.

THE CREATIVE TEAM

SARAH BAHR# (she/her)

Scenic Designer

History Theatre: *I Am Betty, The Root Beer Lady, Parks: Portrait of a Young Artist.* **Theater:** (selected) *Ten Thousand Things: Men on Boats, Violet, This Girl...; Emilia, Iphigenia at Aulis, Thunder Knocking on the Door, The Sins of Sor Juana;* Trademark Theater: *The Reunion, 5, The Hollow, Understood, The Boy and Robin Hood;* Jungle Theater: *The Effect, Christmas*




Give the Gift of Theater!

Guarantee an evening of fun for anyone on your list.

Stop by the box office during intermission, call the box office at 651-292-4323, or visit

historytheatre.com

 history theatre

THE CREATIVE TEAM

at Pemberley trilogy, *Redwood*, *Stinkers*, *Small Mouth Sounds*, *The Wolves*, *Lone Star Spirits*, *Anna in the Tropics*; Theater Latte Da: *Stones in His Pockets*, *We Shall Someday*, *To Let Go and Fall*; Artistry: *Singin' in the Rain*, *Waitress*, *25th Annual Putnam County Spelling Bee*; Theater Mu: *Man of God*, *Maybe You Could Love Me*. **Opera** (selected): Jacobs School of Music: *La Boheme*, *Carmen*; Minnesota Opera: *Don Giovanni*, *Albert Herring*, *Romeo & Juliet*. **Awards:** American Theatre Roll Call People to Watch: Twin-Cities 2024. **Training:** MFA Design and Technical Theatre, UMN, MA Studio Art, NYU. BFA Design and Technical Theatre, UMN-Duluth. **Upcoming:** Theater Latte Da: *Gutenberg!* *The Musical*, *My Antonia*; Theater Mu: *Hmong Futures*.

URSULA K. BOWDEN (she/her)

Properties Designer

History Theatre: *Don't miss Doris Hines*, *I Am Betty*, *A Unique Assignment*. **Theater:** *Jungle Theater: Six Pack*; Gustavus Adolphus College Theatre: *Secret in the Wings*; UMN: *Macbeth*, *Skin of Our Teeth*; Park Square Theatre: *Jefferson Township Sparkling Junior Pageant*, *The Pirates of Penzance*; Theatre Unbound: *The Penelopiad*, *Silkworms*, *Julia Caesar*; nimbus theatre: *Take Two for Christmas*, *The Pathetic Life and Remarkable Afterlife of Wonder McCurdy*, *The Worst Robber in the West*; Theatre Pro Rata: *Henry V*, *Rocketman*, *A Lie of the Mind*, *The Ever and After*, *My Sister in This House*; Swandive Theatre: *An Outopia for Pigeons*, *Five Flights*, *Defying Gravity*, *The Baltimore Waltz*, *Crumble!*; or *Lay Me Down Justin Timberlake*, *The Complete Works of William Shakespeare (Abridged)*. **Training:** BFA Technical Theatre and Theatrical Design, Drake University. **Upcoming:** nimbus: *Ada*; UMTAD: *Welcome to Thebes*. ursulakbowdendesign.com

ANNIE ENNEKING (she/her)

Fight & Intimacy Coach

History Theatre: *Rollicking! A Winter Carnival Musical*, *Don't miss Doris Hines*, *Whoa, Nellie!* *The Outlaw King of the Wild Middle West*, *Diesel Heart*, *Secret Warriors*. **Theater:** Guthrie Theater: *Cabaret*, *A Midsummer Night's Dream*, *Little Shop of Horrors*, *Skeleton Crew*, *The History Plays*, *A Raisin in the Sun*; UMN: *James I*, *As You Like It*, *Troilus and Cressida*, *Hamlet*; Theater Latte Da: *Man of La Mancha*, *Cabaret*; *Jungle Theater: Hand to God*, *Noises Off*, *The Effect*; Park Square Theatre: *Of Mice and Men*, *Cyrano*; Theater Mu: *Cambodian Rock Band*, *Man of God*; Shakespearean Youth Theatre: *Hamlet*, *Romeo and Juliet*, *Julius Caesar*;

Dark & Stormy Productions: Extremities, *Fool for Love*; Theatre Pro Rata: *Bernhardt/Hamlet*, *Three Sisters/No Sisters*; St Olaf: *The Effect*. **Music:** *Annie and the Bang Bang*. **Teaching:** UMN. **Awards:** Jerome Foundation, 2010 McKnight Theater Artist Fellowship.

CALEB BYERS (he/him)

Vocal Coach

History Theatre: *Hungry Like the Wolf* (debut). **Theater:** Supermoon Theatre: *In the Backroom*, *All Your Shimmering Gold*; Spiral Theatre: *Road to Nowhere*; Jericho Arts Centre: *The Other Woman*. **Other:** Parkway Theater: *Scream it Off Screen*; Oslo Theatre Co. speech and dialect work, freelance. **Awards:** Artists' Choice award, MN Fringe 2025. **Training:** Diploma w/Honors, William B. Davis Centre for Actors' Study, VanArts. caleb.cg@hotmail.com

BAILEY FENN (she/her/hers)

Assistant Sound Designer

History Theatre: *Hungry Like the Wolf* (debut). **Theater:** Open Eye: *Strange Heart: The Dream Songs of John Berryman*, *Through Our Eyes Play Festival*; Artistry: *Kiss Me Kate*; Lyric Arts: *A Nice Family Christmas*, *Log Kya Kahenge*; Children's Theatre Company: *Twelfth Night*; Park Square Theatre: *The Ferryman*; Guthrie (Dowling Studio): *Troilus and Cressida*; UMN: *Witch, F*cking A*, *Describe the Night*, *Uncle Vanya*. **Teaching:** Interim Audio/Media Supervisor, UMN. **Training:** MFA Design and Technical Theatre, UMN, BFA Theatre Production, Auburn University, AA Technical Production, Chipola College. **Upcoming:** Cretin-Derham Hall: *The Little Mermaid*; Children's Theatre Company: *Hadestown: Teen Edition*. IG: @baileyfennsounddesigns

GIANNA HASEMAN (she/her)

Assistant Stage Manager

History Theatre: *Don't miss Doris Hines*, *Whoa, Nellie!* *The Outlaw King of the Wild Middle West*, *Handprints*, *The Root Beer Lady*. **Theater:** Artistry: *Kiss Me, Kate*; Park Square Theatre: *R. L. Stine's Goosebumps The Musical: Phantom of the Auditorium*, *The Best Christmas Pageant Ever*; New Arab American Theater Works: *Rosette*; Gremelin Theatre: *Apples In Winter*, *The Thin Place*; Twin Cities Theater Camp: *Something Rotten! Jr.*; *Matilda The Musical*, *The Music Man*, *The Logic Pit*; UMN Theatre Arts & Dance Dept: *Energy & U*, *The 25th Annual Putnam County Spelling Bee*, *Moliere One Acts*, *She Kills Monsters*. **Training:** B.A. Theatre Arts, UMN: *Twin Cities*.

Progress doesn't happen quietly.

It takes courage. It takes community.

It takes voices willing to speak up.

AM950 amplifies the conversations
that move Minnesota forward — every day.

AM950 — Tune in. Speak up.

www.am950radio.com



AM
950

THE CREATIVE TEAM

ALAYNA JACQUELINE (she/her)

Dramaturg

History Theatre: *Writer: Dayton's, Dramaturg, Hungry Like a Wolf, Dramaturg, Rollicking! A Winter Carnival Musical; Dramaturg, Handprints, Dramaturg, The Boy Wonder. Theater: Dramaturg/Writer: East West Players, Seven Devils Playwrights Conference, Theater Mu, Daleko Arts, Phoenix Theater, Market Garden Theatre, Walking Shadow Theatre, Renaissance Theaterworks, National Black Theatre, William Inge Center, Concord Theatricals, Playwrights' Center, Athena Project, MadLab Theater, Lincoln Theater, Pythian Theater. Plays/Musicals: You Know I'd Never (Even If I Did), All Of The Everything, Laurie, Laurie An Urban Legend, The Retelling, An Evening With Ella And Harold, Drapetomania, Get Broken Like Me, It's Too Cold For You Here. Other: Riverwalk Audioplays, Hidden Herald Audioplay Project, Theater Begins Here podcast. Training: BA, Theater, Otterbein University, MFA, Creative Writing, Goddard College. Alaynajacqueline.com*

MONTANA JOHNSON (she/her)

Sound Designer

History Theatre: *Christmas of Swing, Snapshots: Life in the City. Theater: Park Square Theatre: Holmes and Watson; Gremlin Theatre: Apples in Winter; Jungle Theater: Every Brilliant Thing, You Can't Take It With You; Guthrie Theater: Juno and the Paycock, Embers, Skiing on Broken Glass. Training: MFA, Sound Design CalArts. montanajohnsondesign.com.*

LAURA LEFFLER+ (she/her)

Director

History Theatre: *Rollicking! A Winter Carnival Musical, Whoa, Nellie! The Outlaw King of the Wild Middle West, Superman Becomes Lois Lane, The Boy Wonder, multiple workshops. Theater: Artistry: Sweet Charity; Park Square Theatre: Jefferson Township Sparkling Junior Talent Pageant; Twin Cities Horror Festival: Schaulust; Umbrella Collective: Ex-Gays, Penelope, The Awakening; Guthrie Theater, Theatre de la Jeune Lune, The Moving Company, Twenty Percent Theatre Company, The Playwrights' Center, and more. Awards: Best Director, CityPages 2018. Training: MA, U of Kansas; BA, Baker University, study abroad at Harlaxton College. lauraleffler.me*

STACY MCINTOSH* (she/her)

Stage Manager

History Theatre: *Whoa, Nellie! The Outlaw King of the Wild Middle West, Hungry Like a Wolf. Theater: Now in her 28th year as a Stage Manager, Stacy has managed more than 70 productions at the Children's Theatre Company; also stage managed Cort Theatre, New Victory Theater, The Old Globe, Alliance Theatre, Guthrie, Mixed Blood and Illusion Theaters and Marin and Willows Theatre Companies. Other: Stage Manager, NHL Winter Classic, NHL Stadium Series; 2018 Super Bowl pregame event; Artist Hospitality Manager, Basilica Block Party and The Taste of Minnesota. Awards: Recipient, Minnesota Theater Award. Training: BA, U of Northern Iowa. Upcoming: Artist Service Manager, 2026 Special Olympics USA Games Thrivent Fan Fest and Cast/Stage Manager, Opening and Closing Ceremonies, 2026 Special Olympics USA Games. A proud member of Actors' Equity.*

KARIN OLSON# (she/her)

Lighting Designer

History Theatre: *I Am Betty, Handprints, The Defeat of Jesse James, Runestone! A Rock Musical, Behind the Sun, River Road Boogie, The Debutante's Ball. Theater: MN Opera: The Snowy Day, Song Poet; Theater Latte Da: Johnny Skeezy; Alliance Theatre, Atlanta: Into the Burrow; Theater Mu: Fifty Boxes of Earth, Kung Fu Zombie saga; Twin Cities Ballet: Romeo and Juliet the Ballet, set to the music of Queen; Jungle: Redwood, Cambodian Rock Band; Guthrie: Circle Mirror Transformation; Cleveland Playhouse: Antigone; Children's Theatre Company: Spamtown, USA; Trinity Rep, Ordway, Oregon Shakespeare Festival, Syracuse Stage, North Carolina Black Rep, Trademark Theater, Park Square, Mixed Blood Theatre, Frank Theatre, Full Circle Theater, Artistry, Stages, Penumbra, BRKFST Dance, Hatch Dance, Threads Dance Project, many others. Awards: 2023-24 McKnight Theater Artist. Upcoming: Park Square Theatre: A Chorus Line. karinolsonlighting.com*

LESLIE RITENOUR (she/her)

Video Designer

History Theatre: *Rollicking! A Winter Carnival Musical, Don't miss Doris Hines, The Root Beer Lady, I Am Betty, Handprints, The Defeat of Jesse James. Theater: Jungle Theater: The Effect; Collide Dance Co.: Bonnie and Clyde, Romeo and Juliet, Broadway Dancin' 2025, Dracula. Training: B.S. Psychology, B.A.Theatrical Arts, UMN-TC. Upcoming: Collide Dance Co: The Joy List. Ldritenour.com @ Babybeanlettuce*

RUBBLE&ASH (she/her)

Costume Design

History Theatre: *Superman Becomes Lois Lane, The Boy Wonder. Theater: nimbus theatre: ten shows since 2018 including The Pathetic Life and Remarkable Afterlife of Elmer McCurdy, The Red and The Bright, Take Two for Christmas; Interact Center for the Performing Arts (cabarets).*



**THEATER IS...
MORE FUN
WITH A GROUP!**
Reserve Your Group Today!
Contact Craig 651-292-4320
groups@historytheatre.com



LEE GRANT

The myth. The badass. The legend. Spanning more than eight decades of fearless artistry and unapologetic grit, Lee Grant has done it all. She survived the Hollywood blacklist and endured plenty of misogynistic commentary from men throughout her career.

THE WILLMAR 8 DOCUMENTARY

This doc speaks to the boldness and tenacity Grant carried throughout her career—after being blacklisted for 12 years. It was Grant’s first time directing in this format, she turned the story into a made-for-TV movie, *A Matter of Sex*.

THE WILLMAR 8 DOCUMENTARY



SIMON LE BON

The lead singer of the iconic '80s British band Duran Duran, known for their new wave and synth-pop sound. Their biggest hits include *Hungry Like the Wolf* and *Rio*. Simon was Sandra’s #1 crush in the '80s.

THE MCCARTHY ERA

The early 1950s was a time when fear of communism fueled suspicion and accusations that ruined Hollywood, government, and other high-profile personalities’s careers and lives. Grant was blacklisted after refusing to testify before the House Un-American Activities Committee. That experience shaped her bold, fearless storytelling and the stories she told after the blacklist.



SIMON LE BON

A MATTER OF SEX

This made-for-TV movie portrayed the Willmar 8 story through a more soap-opera lens. Director Grant zooms in on Glennis played by her daughter Dinah Manoff as group's quiet, rising leader. Glennis balances public, professional and private sacrifices from the strike as she settles into her marriage with Tobe.

GAME SHOWS

Notice what launches us into game shows like Wheel of Fortune and Bingo. Pay attention to the prizes, they are breadcrumbs leading to important threads.

PROTEST SONGS

During the strike, protest songs were a powerful way for the women to stay warm, build solidarity, stay focused and lift their spirits. The music gave strength to the cause and turned protest into community.

THE ROSARY

Sandra talks about her mother, religion, and how they changed way she sees the world in monologues that are like Moth Radio Hour.

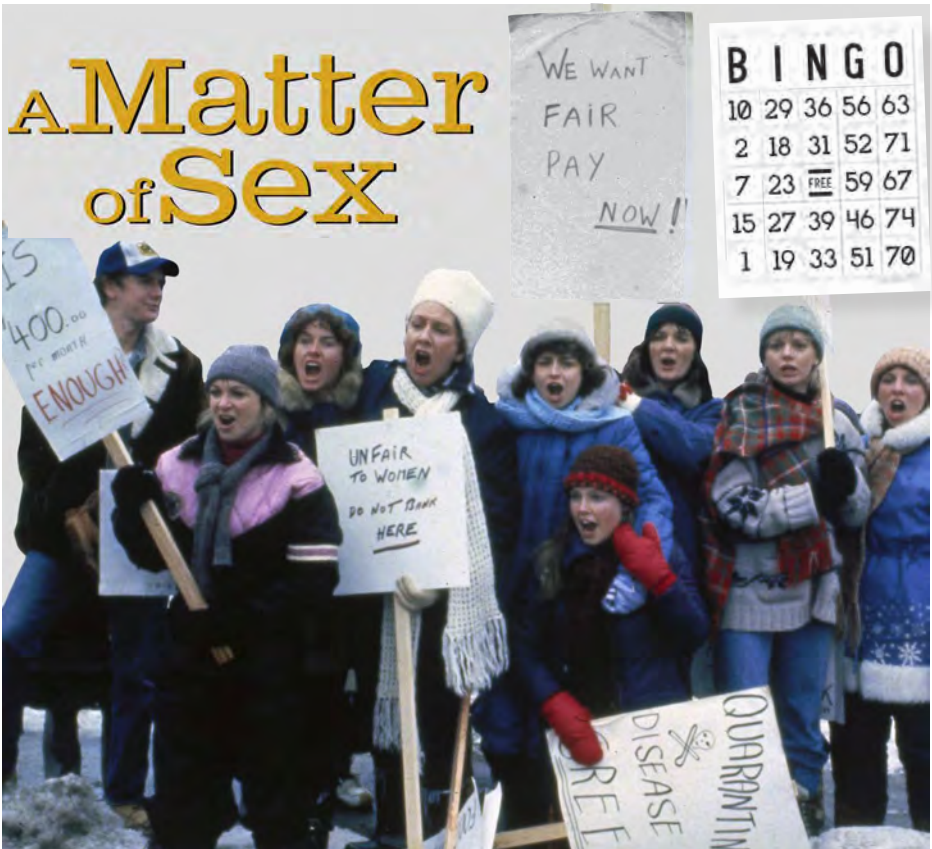
WOLVES

Wolf packs travel in lines. The fiercest leads, the more-vulnerable go in the middle, and the strongest follows at the end. As the wolves sick or injured, or as the babies grow up, they move about in the line. Keep an eye on where the Willmar 8 women's "pack" is.

BOOKSHELF

The bookshelf is a treasure trove of memories and artifacts that transport us to the bedroom of teen Sandra in the '80s—a Duran Duran poster, a Walkman, a trophy, and so much more.

—Compiled by Alayna Jacqueline



THANK YOU FUNDERS



**CLEAN
WATER
LAND &
LEGACY
AMENDMENT**



**MINNESOTA
STATE ARTS BOARD**

This activity is made possible by the voters of Minnesota through a Minnesota State Arts Board Operating Support grant, thanks to a legislative appropriation from the arts and cultural heritage fund.



Frechette Family Foundation



**OLSETH
FAMILY FOUNDATION**



Sarah J. Andersen Fund
of the Hugh J. Andersen
Foundation



To make a donation, visit
www.HistoryTheatre.com/donate
 or call the Development Office at 651-292-4326

THANK YOU DONORS

Gifts received in the last 18 months as of 2/23/26

\$10,000+

Anonymous
John Apitz⁵ and Mary Magnuson
Candace Campbell⁵ and Jerry Seck
George Dow⁵ and Bonnie Hill
Joe and Lois West⁵ Duffy
Dr. Mary Anne Ebert and Paul Stembler
Karen Gooch
Gene Link⁵ and Ann Hirsch
Mildred McLean
Jeannine Rivet and Warren Herreid
Jim⁵ and Kris Rollwagen
Ken Rothchild
Bonnie Scott
John⁵ and Elizabeth Sebastian
Jennifer⁵ and Stuart Simek

\$5,000 - \$9,999

Evelyn and David Brabec
Ellen Conway
Sue and David Cummings
Carolyn and Robert Hedin
Wes and Deirdre Kramer
John A. Larsen
Chad and Laura Nicholson

\$1,000 - \$2,499

Greg and Penny Anderson
Suzanne Ammerman
Helen Bergren
Gerald and Marlen Bohn
Roger and Ronnie Brooks
Elizabeth Childs
Darrel and Barbara Christoferson
Janis Clay and Elam Baer
Jeanne and David Cornish
Eleanor Crosby
Marybeth Dorn
Lucas Erickson
Barbara Frame
John Gibbons
Robert and Elizabeth Glesne
Helen Grant
Vicky Grondahl
Joan Grzywinski
Patrick and Amy Hagen
Dr. Jo-Ida C. Hansen
Rick and Kathy Hansen
Sam and Mirja Hanson
Jim and Colleen Hayes
Pam and Rick Jacobson
Kara Johnson
Tom Klaz
Karen Knott and Soni Olson
Sandra Korlath
Patricia Koors
Lynn Kvalness
Laurel Lapore
Wendy and Gordon Legge
Allen and Kathleen Lenzmeier

Richard and Nancy Nicholson, Nicholson
Family Foundation
Cheryl Olseth and James Empson, Olseth
Family Foundation
Carol Perkins
Jeff Peterson and Jill Catherwood
Michele Pierce
Ray Skowyra and Marianne Short
Kris and Jon Stevens
Mark and Pondie Taylor
Kay and James Tennesen
Jon Thomas⁵ and Duchess Harris

\$2,500 - \$4,999

Anonymous
Dave and Ellen Beehler
Diane and Robert Coderre
Bob Friedman and Debbie Cash
Kath⁵ and Maureen Hammerseng
Dianne Latham
Laurel and Eric Lein
Cynthia and Alan Miner
Cheryl Moore⁵
Fran and David Nordhausen
Barbara and Robert Peterson

Karen Lilley and David Hansen
Katy Lindblad
Candace McClenahan
Peg Meier
Crystal K. Meriwether
Sara Meyer and Gene Merriam
John and Karen Meslow, Stablich
Foundation
Mary Meyer
Karen Mueller⁵
Marilyn and Douglas Nelson
Tom and Janet Nelson
Katherine J. Nevins
Carol and Doug Ogren
Kyle D. Pederson
Jaime Pedraza and Steve
Gronewold
Ron Peluso
Kera and Steve Peterson⁵
Michelle Pett & Eric Britt
Debra and Larry Que
Maria Reamer
Christine and Dan Rice
Nancy Roehr
DeDe and Tom Scanlon
Bruce and Julianne Seiber
Nancy and Stephen Silcox
Janis and Steven Sines
James and Mary Stahlmann
Sharron Steinfeldt
Jill Trescott
Daniel Vogel
Carole Wilson
Dick and Diane Wright

Peter and Sue Wyckoff
Ann Wynia

\$500 - \$999

Anonymous in honor of Anne
Hammel
Barb and Frank Abramson
Paul and Jan Anderson
Roger and Margie Anderson
Michael Barone
Ronald and Joyce Beauchane
Dan and Dee Bender
Mary Bennett
Marianne Berkopec
Denise and Jon Beusen
Russ and Becky Bierbaum
Lyle and Kris Blanchard
Harald Borrman
Rita and Bill Bourne
Patricia and Roy Bower-Jernigan
Lorna Breiter
Karen and Jack Carter
Alex and Judy Cirillo
Joan Cochran and Matthew Crellin
Joan Darling
Elaine Darst
Sharon Engberg and Sharon Neal
Anna Marie Ettl
Patricia Fair
Cathy and Nathaniel Fuller
Pat Gavan-Gordon
Marc Goess
Harlene Hagen
Janet Hall
Greg and Laura Halldin

THANK YOU DONORS

Tina Ham Peterson
Jeffrey Hatcher and Lisa Stevens
Linda Havenor
Cheryl Hirata-Dulas
Jolene Hunter
Barbara Izdepski
Margaret Johnson
Michael and Margaret Johnson
Stephen and Anne Johnson
Kay King
Sharon Kjellberg
Mary Knoepfler
Thomas and Dee Dee Kozlak
Miles and Suzanne Lahr
Pat Lawrence
Michael and Elizabeth
Macdonald
Ron and Mary Mattson
Lisa McDaniel
Mike Meyer
Valerie Meyer
Kathryn Mitchell and Terrance
Brueck
Peter Moore
Bruce Nelson
Pamela J. Nelson
Carol Nietz
Jim and Mary Ellen Nichols
Alta Oben
Linda Ojala
Ivan Ose
Judith and John Peterson
Judy and Robert Prentiss
Richard and Keely Remedios
Mark Ritchie and Nancy
Gaschott
Sally and Alan Ruvelson
Shirley Sailors
Tim and Kim Scanlan
Susan and Mark Schaeffer
Paul Schumann
Carol Sletner
Clifford C. and Virginia G
Sorensen
Linda Spiess
Mary Stark Johnson
Barbara Strenge
Deanna Thompson and Neal
Peterson
In-Fin Tuan^s
Carroll Vance
James and Jenifer Vogel
Lori Walker
Mary Walser
Julie Weaver
Steve and Melinda Weber
Tom and Rita Welch
Carol Westberg
Connie Westeen
Steve Wickstrom and Bonnie
DeWick
John Windhorst
Terry and Susan Wolkerstorfer

\$250 – \$499

Jeanne Andre
Sylvia Beach and Gordon Rouse
Tom Beck
Lisa Beecroft
Jen Burleigh-Bentz
Thomas and Margit Berg
Bonnie Beverly
Marsha Beyer
Deborah Bishop
Kathleen Boe
Scott Clugston
Janet Colliton
Stephen Colton
Jay Couture
Jonathon Despotes-Tourdot
Crystal Doyle
Elizabeth and Larry Drumm
Paul Eger
Sheila Faulkner
Michael Flynn
Lois Gernbacher
Mindy and Roger Greiling
Steven Griffith
Erin Gross
Bonnie Grzeskowiak
Gayl Gustafson
Jean and James Hartman
Kathleen Heaney
Elise Hilton
Arthur and Donna Hogenson
David Hunter
Linda Huwe
Barbara Janssen
Daniel Japuntich
Renee Johnson
Linda Kaphingst
Gary and Lee Kilgard
Bonnie Koch
Karen Larsen
Carol Larson
Carol and James LeDuc
Judith and Stephen Lewis Jr
Beth Lafave
Theresa and Frederick Lippert
Pamela Lott
Mark Lystig
Susan Maples
Ruth Markowitz
Marilyn Martin
Pam and David McCarthy
Donn and Bonnie McLellan
Karen Minge
Theresa Mish
Mary Morris
Peter Nowacki
Mike and Barbara O'Connell
Margaret Olson
Nor and Kevin Olson
Bonnie Palmquist
Ken Peterson and Connie Lewis
Kristine Peterson
Rick and Terry Polenek
Lucia Pozzi
Steve Robertson and Susan Peacock

Marie Rossa
Connie and Jack Scanlon
Kenneth^s and Mary Schaefer
Dana and Jon Schroeder
Laurel Severson
Robert and Linda Shauinger
Linda and Garry Sill
Susan Smith and Brian Lewis
Judith Solarz
Rosemary Soltis
Joe and Lori Stanley
Russ Stark
Robert and Mary Super
John and Jan Thames
Daphne Thompson
Harv Thompson and Richard
Klemm
Brian and Vallorie Toder
Stephen and Julie Troutman
Jane and Kevin Vanderpoel
Leslie Watkins and Doug Larson
Sandy Werts
Susan Zietlow
Jo Zimmermann
Nancy Zingale and William
Flanigan

LEGACY CIRCLE

The Estate of Betty J. Anderson
The Estate of William Randall Beard
The Estate of Marianne Carroll
D'Angelo
Dr. Mary Anne Ebert and Paul
Stembler
Pat Gavan-Gordon
Dr. Jo-Ida Hansen
The Estate of June P. Nelson
Michele Pierce
The Estate of Jeanne Audrey Powers
Ken and Nina Rothchild
Nancy A. Stewart and Timothy
D. Kehr
The Estate of Dale Gordon Swanson

GIFTS IN MEMORY OF THE FOLLOWING INDIVIDUALS

Marcia Marilyn Anderson
Jay Berne
Pat Faunce
Gary Fischer
Charles and Marla Hall
June P. Nelson
Paul Pfeifer
Nina Rothchild

STAFF

LAURA LEFFLER
Artistic Director

KAREN MUELLER
Managing Director

Ashton Schneider
Business Manager

Rob Thomas
Development Director

McKinnley Aitchison
Development and
Administrative Associate

Paul de Cordova
Education Manager

In-Fin Tuan
Marketing Consultant

Chari Hall
Audience Development
Director

Craig Cerrato
Group Sales Manager,
Volunteer Coordinator

Julia Milne
Audience Services
Coordinator

Gethsemane Herron
Literary Manager and
Artistic Associate

Gunther Gullickson
Technical Director

Nick Walberg
Master Electrician

Meghan Kent
Costume Supervisor

**Esmé Burr, Lu Chen,
Monique Franson, Alex Geer,
AJ Methner, John Schwab,
Rhu VanVector-Lee**
Front of House

BOARD OF DIRECTORS

Dr. Jon Thomas
PRESIDENT

George Dow
VICE PRESIDENT

Tyler Zehring
TREASURER

Lois Duffy
SECRETARY

John F. Apitz
Candace Campbell
Lori Castille
Kath Hammerseng
Gene Link
Cheryl L. Moore
Kera Peterson
Katrina Phillips
James Rollwagen
Kenneth Schaefer
John Sebastian
Jennifer Simek

MISSION

History Theatre entertains, educates, and engages audiences by creating, developing, and producing new and existing works that explore Minnesota's past and the diverse American experience.

LAND ACKNOWLEDGEMENT

History Theatre sits on the ancestral, traditional and contemporary land of the Dakota people, for whom the land holds historical, spiritual, and political significance. We recognize and honor the Dakota people, ancestors, and descendants, as well as the land itself, and all the sovereign Native nations in Minnesota and beyond. We recognize that this acknowledgement itself is not enough and only serves as a first step towards decolonization.

history theatre

THE ROOT BEER LADY

BEHIND THE SUN



HELP MAKE

history

SECRET WARRIORS

Support History Theatre

Make a tax-deductible gift to help produce new plays and keep History Theatre an engaging place to learn about our past!

Please visit **historytheatre.com/donate**

Thank you!

SCAN QR CODE TO DONATE



We saved you a seat for after the show!

CELESTE OF ST PAUL

26 EAST EXCHANGE WWW.CELESTESTPAUL.COM



2025-2026 SEASON



"Courting Harry is superb."

- Star Tribune

History Theatre classic returns!

COURTING HARRY

By LEE BLESSING

Directed by Joel Sass

May 14-June 7, 2026

SUMMER 2026



"...a love letter to the Boundary Waters."

- Pioneer Press

The Trailblazer is Back!

T H E ROOT BEER LADY

Written and Performed by KIM SCHULTZ

Originally directed by Addie Gorlin-Han

Remounted by Jess Yates

July 8-26, 2026

SINGLE TICKETS ON SALE
BOOK A GROUP of 10+ AND SAVE!

For more information, visit
historytheatre.com